



1600W 1U Power Supplies

Features	Benefits
• 1U High	• Utilizes less system space
• Internal ORing FETs & Current Share	• Suitable for N+1 redundancy
• High Efficiency	• Easier system cooling
• I2C, PMBus™ Communication Option	• Easier system monitoring



Specification		
Model	RFE1600	
Input Voltage Range	VAC	85 - 265VAC, 47 - 63Hz. See model selector for power derating(2)
Input Current (Max) 115/230VAC	A	11.6 / 8.1A
Inrush Current	A	<35A
Power Factor Correction	-	Meets EN61000-3-2, PF > 0.98 at full load
Temperature Coefficient	%/°C	<0.02%/°C
Overcurrent Protection	%	105 - 120%
Overvoltage Protection	%	110% (Tracking). Cycle AC to reset or utilize Remote On/Off(1)
Overtemperature Protection	-	Shutdown with automatic reset. Warning signal provided(1)
Hold up time	ms	>10ms, 115/230VAC Input, 80% loading
Leakage Current	mA	< 0.75 / 1.5mA, 115 / 230VAC, 60Hz
Remote Sense Compensation	-	RFE1600-12: 0.25V / Wire, RFE1600-24: 0.5V / Wire, RFE1600-32: 0.75V / Wire, RFE1600-48: 1.0V / Wire
Indicators	-	AC OK: Green LED, DC OK / Fail: Green / Red LED
Remote On/Off	-	Yes, inhibit & enable
Parallel Operation	-	Yes, single wire current share, 5% accuracy of max current, up to 10 units
AC Fail Signal	-	Open Collector, ON when AC is within 85 - 270VAC
DC Good Signal	-	Open Collector, ON when output is above 85 to 95% of setpoint (tracking)
Remote Adjust	-	By either external 0 - 5V signal or 1k potentiometer(1)
I ² C Interface	-	Isolated from output, Add suffix /S, PMBus™ compatible(1)
Auxiliary Output	-	11.2 - 12.5V, 0.5A, 240mV ripple and noise
Operating Temperature	°C	-10 to +70°C, derate 2%/°C from 50 to 60°C, 2.5%/°C from 60 to 70°C
Storage Temperature	°C	-30 to +85°C
Humidity (Non condensing)	%RH	Operating: 10 - 90%RH, Storage: 10 - 95%RH
Cooling	-	Two variable speed internal fans, airflow exits across input/output connector
Withstand Voltage	-	Input to Output 3kVAC, Input to Output 2kVAC, Output to Ground: RFE1600-12, -24V 500VAC, RFE1600-48 2250VAC
Isolation Resistance	MΩ	>100MΩ at 25°C & 70%RH, Output to Ground 500VDC
Vibration (Basic transportation)	-	IEC60068-2-64 (BasicTransportation)
Shock (Basic transportation)	G	IEC60068-2-27 (Basic Transportation 20G)
Safety Agency Certifications	-	IEC/UL/CSA/EN62368-1, 60950-1, CE Mark
Conducted and Radiated EMI	-	EN55022 & FCC part 15; Conducted class B, Radiated class A
Immunity	-	IEC61000-4-2 (lv 2,3), -3 (lv 2), -4 (lv2), -5 (lv3,4), -6 (lv2), -8 (lv 4), -11
Size (W x H x D)	mm	Power Supply: 85.1 x 40.9 x 320
Weight	g	1770
Warranty	yrs	3

Notes: (1) See installation manual for detailed specifications & test methods (2) Derate linearly 1%/V from 100VAC to 85VAC input

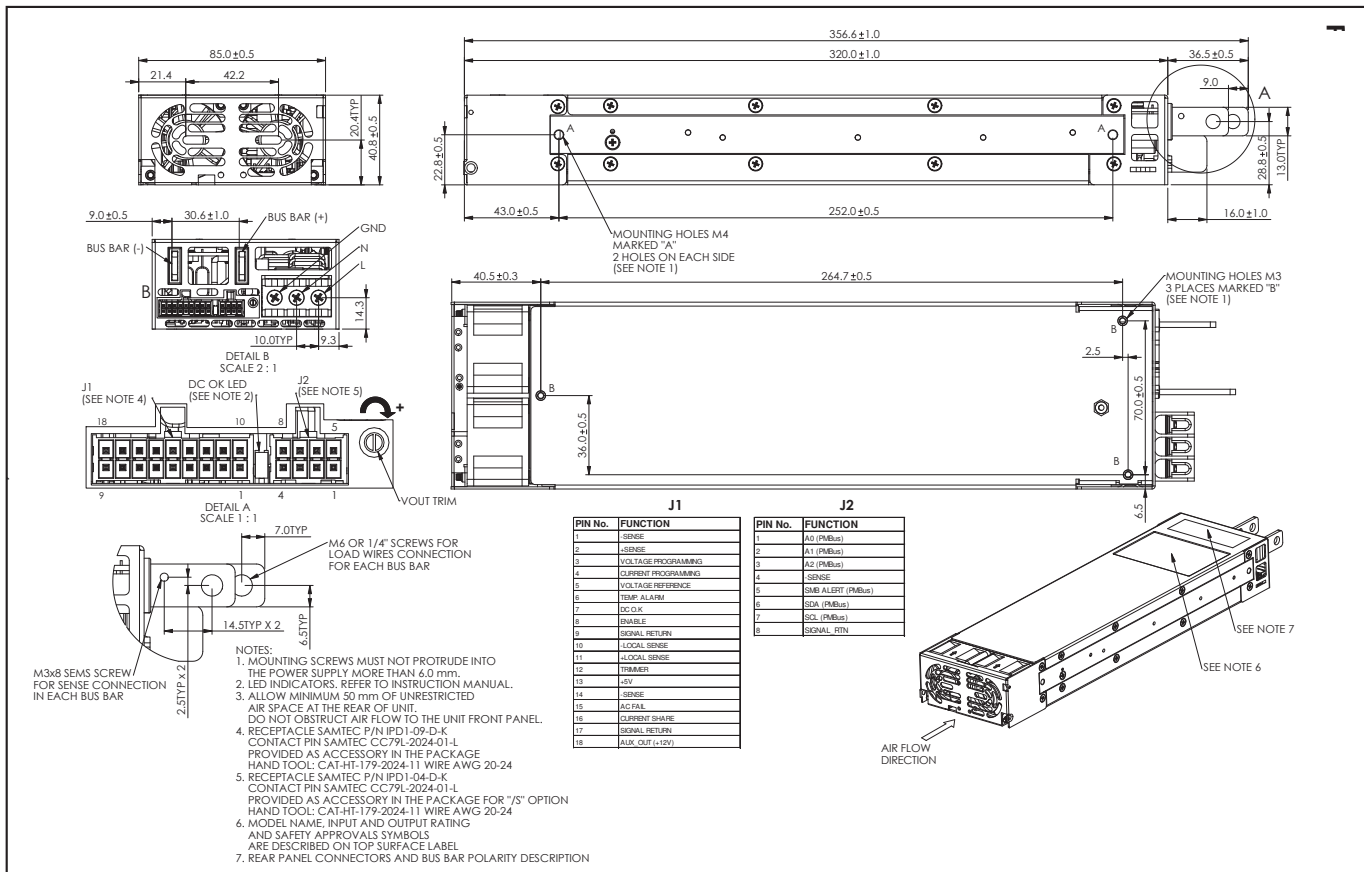
Model Selector

Model	Output Voltage	Adjust. Range(1)	Max Current (Vin>170VAC)	Max Power (Vin>170VAC)	Max Current (100<Vin<170VAC)	Max Power (100<Vin<170VAC)
RFE1600-12	12V	9.6 - 13.2V	133A	1596W	92A	1104W
RFE1600-12/S	12V	9.6 - 13.2V	133A	1596W	92A	1104W
RFE1600-24	24V	19.2 - 29V	67A	1608W	46A	1104W
RFE1600-24/S	24V	19.2 - 29V	67A	1608W	46A	1104W
RFE1600-32	32V	25.6 - 38.4V	47A	1504W	34.5A	1104W
RFE1600-32/S	32V	25.6 - 38.4V	47A	1504W	34.5A	1104W
RFE1600-48	48V	38.4 - 58V	33A	1584W	23A	1104W
RFE1600-48/S	48V	38.4 - 58V	33A	1584W	23A	1104W

Model	Load Reg	Line Reg	Ripple & Noise	Efficiency (1)	TC
RFE1600-12	60mV	30mV	240mV	87 / 90%	-
RFE1600-12/S	60mV	30mV	240mV	87 / 90%	Yes
RFE1600-24	120mV	60mV	240mV	88 / 90%	-
RFE1600-24/S	120mV	60mV	240mV	88 / 90%	Yes
RFE1600-32	160mV	80mV	320mV	88 / 90%	-
RFE1600-32/S	160mV	80mV	320mV	88 / 90%	Yes
RFE1600-48	240mV	120mV	480mV	89 / 92%	-
RFE1600-48/S	240mV	120mV	480mV	89 / 92%	Yes

Notes: (1) At 75% load, 115/230 VAC input

Outline Drawing RFE1600 Series





TDK-Lambda France SAS

3 Avenue du Canada
Parc Technopolis
Bâtiment Sigma
91940 les Ulis
France
Tel: +33 1 60 12 71 65
Fax: +33 1 60 12 71 66
france@fr.tdk-lambda.com
www.emea.lambda.tdk.com/fr



Italy Sales Office

Via Giacomo Matteotti 62
20092 Cinisello Balsamo (MI)
Italy
Tel: +39 02 61 29 38 63
Fax: +39 02 61 29 09 00
info.italia@it.tdk-lambda.com
www.emea.lambda.tdk.com/it



Netherlands

info@nl.tdk-lambda.com
www.emea.lambda.tdk.com/nl



TDK-Lambda Germany GmbH

Karl-Bold-Strasse 40
77855 Achern
Germany
Tel: +49 7841 666 0
Fax: +49 7841 5000
info.germany@de.tdk-lambda.com
www.emea.lambda.tdk.com/de



Austria Sales Office

Aredstrasse 22
2544 Leobersdorf
Austria
Tel: +43 2256 655 84
Fax: +43 2256 645 12
info@at.tdk-lambda.com
www.emea.lambda.tdk.com/at



Switzerland Sales Office

Eichtalstrasse 55
8634 Hombrechtikon
Switzerland
Tel: +41 44 850 53 53
Fax: +41 44 850 53 50
info@ch.tdk-lambda.com
www.emea.lambda.tdk.com/ch



Nordic Sales Office

Haderslevvej 36B
DK-6000 Kolding
Denmark
Tel: +45 8853 8086
info@dk.tdk-lambda.com
www.emea.lambda.tdk.com/dk



TDK-Lambda UK Ltd.

Kingsley Avenue
Ilfracombe
Devon EX34 8ES
United Kingdom
Tel: +44 (0) 12 71 85 66 66
Fax: +44 (0) 12 71 86 48 94
info@uk.tdk-lambda.com
www.emea.lambda.tdk.com/uk



TDK-Lambda Ltd.

1 Alexander Yanai
Segula
Petah-Tikva
Israel
Tel: +9 723 902 4333
Fax: +9 723 902 4777
info@tdk-lambda.co.il
www.emea.lambda.tdk.com/il



C.I.S.

Commercial Support:
Tel: +7 (495) 665 2627
Technical Support:
Tel: +7 (812) 658 0463
info@tdk-lambda.ru
www.emea.lambda.tdk.com/ru

Local Distribution

