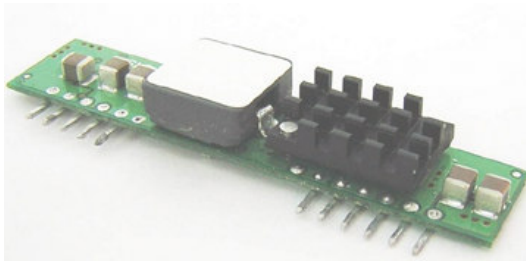


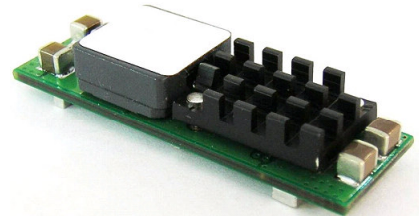
NON-ISOLATED DC-DC Converter

6.0-14Vin, 0.75- 5.0Vout, 20A

INSTALLATION / APPLICATION NOTE



PL20S-W12C



PL20SMS-W12C



PL20S-W12C, PL20SMS-W12C

Content

1. INTRODUCTION	3
2. CONVERTER FEATURES	3
3. GENERAL DESCRIPTION	3
3.1 Electrical Description	3
3.2 Thermal Packaging and Physical Design	3
4. TECHNICAL SPECIFICATIONS	4
5. MAIN FEATURES AND FUNCTIONS	6
5.1 Operating Temperature Range	6
5.2 Over-Temperature Protection (OTP)	6
5.3 Output Voltage Adjustment	6
5.4 Safe Operating Area (SOA)	6
5.5 Over Current Protection	6
5.6 Remote ON/OFF	6
5.7 UVLO (Under-Voltage Lockout)	7
5.8 Output Voltage Tracking (Sequencing)	7
6. SAFETY	7
6.1 Safety	7
7. APPLICATIONS	8
7.1 Layout Design	8
7.2 Convection Cooling	9
7.3 Thermal Considerations	9
7.4 Power De-Rating Curves	10
7.5 Efficiency vs Load Curves	13
7.6 Input Capacitance	15
7.7 Test Set-Up	15
7.8 Remote Sense Compensation	15
7.9 Output Voltage Adjustment	16
7.10 Output Ripple and Noise Measurement	16
7.11 Output Capacitance	16
7.12 PL20SMS-W12C Reflow Profile	16
8. MECHANICAL OUTLINE DIAGRAMS	17
8.1 Outline Diagrams	17
8.2 SMS Tape and Reel Dimensions	17

1. Introduction

This application note describes the features and functions of Lambda's PL20S-W12C and PL20SMS-W12C series of Non Isolated DC-DC converters. These "Point of Load" modules serve the needs specifically of the fixed and mobile telecommunications and computing markets. Capable of operating over a wide input voltage range of 6.0 – 14VDC, this series provides a precise regulated output voltage within the range of 0.7525V to 5.0Vdc. The operating ambient temperature range is –40°C to +85°C. Ultra-high efficiency operation is achieved through the use of synchronous rectification. The modules are fully protected against short circuit and over-temperature conditions.

2. Converter Features

- High efficiency topology, typically 94% at 5.0Vdc
- Industry standard footprint
- Wide ambient temperature range, -40°C to +85°C
- Cost efficient open frame design
- Programmable output voltage via external resistor from 0.7525 to 5.0Vdc
- No minimum load requirement (stable at all loads)
- Remote ON/OFF
- Remote sense compensation
- Fixed switching frequency
- Continuous short-circuit protection and over current protection
- Over-temperature protection (OTP)
- Monotonic Startup with pre-bias at the output.
- UL/IEC/EN60950 Certified.
- Output Voltage Sequencing(Tracking)
- Power Good Signal (Option)

3. General Description

3.1 Electrical Description

A block diagram of the converter is shown in Figure 1. The topology is based on a non-isolated synchronous buck converter. The control loop is optimized for stability, fast transient response and very tight line and load regulation. In a typical pre-bias application the converters do not draw any reverse current at start-up. The output voltage can be adjusted from 0.7525 to 5.0Vdc, using the TRIM pin with an external resistor. The converter can be shut down via a remote ON/OFF input that is referenced to ground. This input is compatible with readily available logic devices; 'positive' logic input is supplied as standard. Positive logic implies that the converter is enabled if the remote ON/OFF input is high (or floating), and disabled if it is low.

The converter is protected against over-temperature conditions. If the converter is overloaded or if the temperature of the converter exceeds its specified operating range, the converter will shut down and re-start once the fault condition is removed.

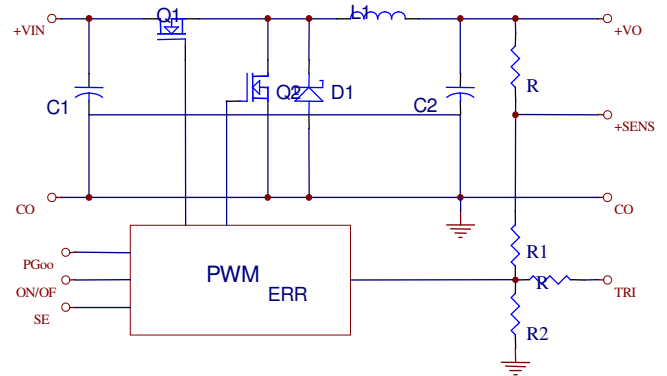


Figure 1. Electrical Block Diagram

3.2 Thermal Packaging and Physical Design

The converter uses a multi-layer FR4 PCB construction. All surface mount power components are placed on one side of the PCB, and all low-power control components are placed on the opposite side; thus, the heat dissipation of the power components is optimized, ensuring that control components are not thermally stressed. The converter is an open-frame product and has no case or case pin. The open-frame design has several advantages over encapsulated closed devices; among these advantages are:

- **Efficient Thermal Management:** The heat is removed from the heat generating components without heating more sensitive, small signal control components.
- **Environmental:** Lead free open-frame converters are more easily re-cycled.
- **Cost Efficient:** No encapsulation. Cost efficient open-frame construction.
- **Reliable:** Efficient cooling is provided by open frame construction.



PL20S-W12C, PL20SMS-W12C

4. Technical Specifications

(All specifications are typical at nominal input, full load at 25°C unless otherwise noted.)

PARAMETER	NOTES and CONDITIONS	Device	Min.	Typical	Max.	Units
Operating Temperature		ALL	-40		+85	°C
Storage Temperature		ALL	-55		+125	°C
Input Voltage	Vo=4.5V Vo=5.0V	Vo.75 to 4.5V Vo 5.0V	6.0 6.5	12 12	14 14	Vdc
Input Under-Voltage Lockout						
Turn-On Voltage Threshold		ALL		5.0		Vdc
Turn-Off Voltage Threshold		ALL		4.0		Vdc
Lockout Hysteresis Voltage		ALL		1.0		Vdc
Maximum Input Current	Vin=0 to 14Vdc, Io=Io, max.	ALL			19	A
No-Load Input Current	Vo=0.7525V Vo=1.2V Vo=1.5V Vo=1.8V Vo=2.0V Vo=2.5V Vo=3.3V Vo=5.0V	ALL		40 50 50 50 60 65 75 95		mA
Off Converter Input Current	Shutdown input idle current	ALL			10	mA
Inrush Current (I ² t)		ALL			0.4	A ² s
Input Reflected-Ripple Current	P-P with 1uH inductor, 5Hz to 20MHz	ALL		220		mA
Output Voltage Set Point	Vin=Nominal Vin, Io=Io,max, Tc=25°C	ALL	-1.5%	Vo,set	+1.5%	Vdc
Output Voltage Trim Adjustment Range	Selected by an external resistor	ALL	0.7525		5.0	Vdc
Output Voltage Regulation						
Load Regulation	Io=Io.min to Io,max	ALL	-0.5		+0.5	%
Line Regulation	Vin=low line to high line	ALL	-0.2		+0.2	%
Temperature Coefficient	Ta=-40°C to 85°C	ALL	-0.03		+0.03	%/°C
Output Voltage Ripple and Noise	5Hz to 20MHz bandwidth					
Peak-to-Peak	Full Load, 1uF ceramic and 10uF tantalum	ALL			75	mV
RMS	Full Load, 1uF ceramic and 10uF tantalum	ALL			30	mV
External Capacitive Load	Low ESR	ALL			8000	uF
Operating Output Current Range		ALL	0		20	A
Output DC Current-Limit Inception	Output Voltage =90% Nominal Output Voltage	ALL	24	30	36	A
Shout Circuit Protection	Continuous with Hiccup Mode					
Sequencing Slew Rate Capability	dVSEQ/dt		0.1		1.0	V/ms
Sequencing Delay Time			10			ms
Tracking Accuracy	Power up Power down	ALL			200 400	mV
Power Good Signal	Asserted Logic High Vo	Suffix "P"	90		110	%

Output Voltage Transient Response						
Error Band	50% Step Load Change, di/dt=2.5A/us	ALL			200	mV
Setting Time (within 1% Vout nominal)	50% Step Load Change, di/dt=2.5A/us	ALL			200	us

Efficiency						
100% Load	Vo=0.7525V Vo=1.2V Vo=1.5V Vo=1.8V Vo=2.0V Vo=2.5V Vo=3.3V Vo=5.0V	ALL		78 84 87 88 89 90 92 94		%



PL20S-W12C, PL20SMS-W12C

Input to Output Isolation	Non-isolation	ALL	0			Vdc
Switching Frequency		ALL		300		kHz
ON/OFF Control, Positive Logic Remote On/Off Logic Low (Module Off) Logic High (Module On)	or Open Circuit	PL20S-W12C PL20S-W12CP PL20SMS-W12C PL20SMS-W12CP	0		0.4 Vin	Vdc Vdc
ON/OFF Control, Negative Logic Remote On/Off Logic Low (Module On) Logic High (Module Off)	or Open Circuit	PL20S-W12CN PL20S-W12CNP PL20SMS-W12CN PL20SMS-W12CNP	0 2.8		0.4 Vin	Vdc Vdc
ON/OFF Current (for both remote on/off logic)	I _{on/off} at V _{on/off} =0.0V	ALL			1	mA
Leakage Current (for both remote on/off logic)	Logic High, V _{on/off} =14V	ALL			1	mA
Turn-On Delay and Rise Time						
Turn-On Delay Time, From On/Off Control	V _{on/off} to 10%V _{o,set}	ALL		3		ms
Turn-On Delay Time, From Input	V _{in,min.} to 10%V _{o,set}	ALL		3		ms
Output Voltage Rise Time	10%V _{o,set} to 90%V _{o,set}	ALL		4		ms
Over Temperature Protection		ALL		130		□
MTBF	I _o =100% of I _{o,max} ; T _a =25°C □ per MIL-HDBK-217F	ALL		0.9		M hours
Weight		ALL		11		grams
Dimensions						
PL20S-W12C packages	2.4x0.51x0.327 inches (61x12.95x8.3 mm)					
PL20SMS-W12C packages	1.7x0.53x0.366 inches (43.2x13.46x9.3 mm)					

5. Main Features and Functions

5.1 Operating Temperature Range

The converters operate over a wide ambient temperature environment of -40°C to 85°C. Attention must be given to the de-rating curves when determining the maximum power that can be drawn from the converter. The maximum power drawn is influenced by a number of factors, such as:

- Input voltage range.
- Output load current.
- Air velocity (forced or natural convection).
- Mounting orientation of converter PCB with respect to the airflow.
- Motherboard PCB design, especially ground and power planes; these can be effective heat sinks for the converter.

5.2 Over-Temperature Protection (OTP)

The converters are equipped with non-latching over-temperature protection. A temperature sensor is located at the hottest point within the converter, typically on top of the switching device. If the temperature exceeds a threshold of 130°C (typical) the converter will shut down, disabling the output. When the temperature has decreased to a safe operating range, the converter will automatically start. The over-temperature condition can be induced by a variety of reasons such as external overload condition or a system fan failure.

5.3 Output Voltage Adjustment

Section 7.8 describes in detail as to how to trim the output voltage with respect to its set point. The output voltage on all models is adjustable over the range 0.7525 – 5.0Vdc.

5.4 Safe Operating Area (SOA)

Figure 2 provides a graphical representation of the Safe Operating Area (SOA) of the converter. This representation assumes ambient operating conditions such as airflow are met as per thermal guidelines provided in Sections 7.2 and 7.3.

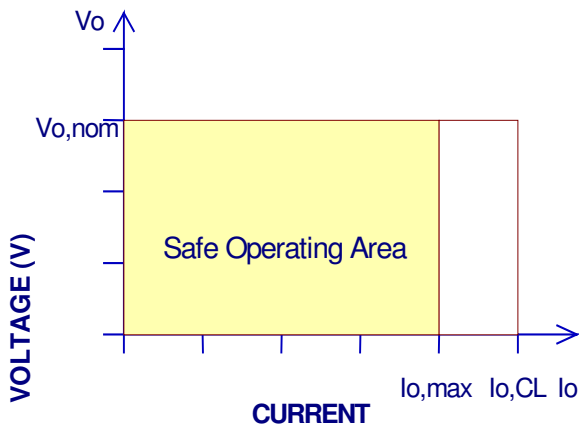


Figure 2. Maximum Output Current Safe Operating Area

5.5 Over Current Protection

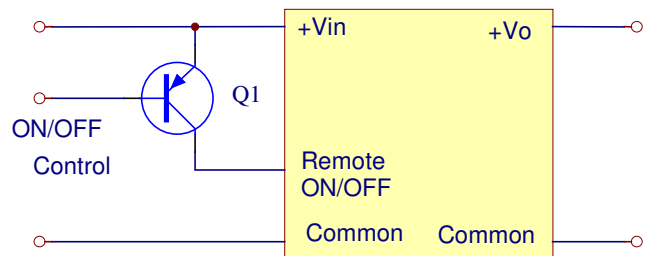
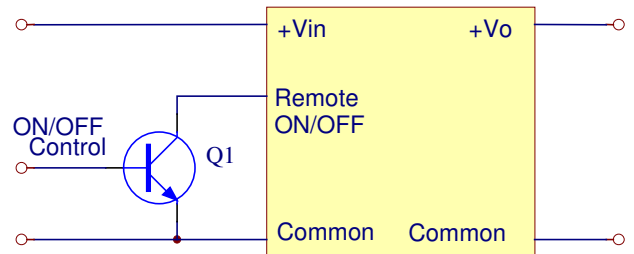
All models have short-circuit and over-current protection. The converter will automatically recover once either condition is removed. It will also supply up to 150% of its rated output current. In the event of an over-current condition the converter will go into a hiccup mode.

5.6 Remote ON/OFF

Positive Logic- The remote ON/OFF input feature of the converter allows external circuitry to turn the converter ON or OFF. Active-high remote ON/OFF is available as standard. The converters are turned 'on' if the remote ON/OFF pin is high (=Vin), or left open. Setting the pin low (<0.4Vdc) will turn the converter 'off'. The signal level of the remote on/off input is defined with respect to ground. If remote on/off is not needed, leave the pin disconnected; the module will be on.

Negative Logic- Designated with a suffix "N" is Negative remote ON/OFF version. The unit is 'off' if the voltage level is above 2.8Vdc. The converter is 'on' if the on/off pin input is low (<0.4Vdc) or left open. The recommended remote on/off drive circuits are shown in figures 3 and 4.

Figure 3. Positive Remote ON/OFF Input Drive Circuit
Figure 4. Negative Remote ON/OFF Input Drive Circuit



5.7 UVLO (Under-Voltage Lockout)

When the input Vcc rises above 5.0V, the converter initiates a soft start. The UVLO function in the converter has a hysteresis approximately 1 volt to provide noise immunity at start-up.

5.8 Output Voltage Tracking (Sequencing)

The converters have a tracking feature that is available via the pin labeled 'SEQ'. When this feature is not used, this pin should be tied to +Vin. When this feature is used, the on/off pin should be left disconnected so that the converter is on by default. The tracking feature (sequencing) is used with two or more converters in applications where one output voltage is required to be in regulation before another. When the output voltage from the 'master' is applied to the SEQ pin of the 'slave', the output voltage of the 'slave' tracks the output voltage of the 'master' until the slave reaches its output voltage set point. The 'master' output voltage must be higher than the output voltage of the 'slave'.

A valid input voltage must be maintained until the tracking and output voltages reach ground potential to ensure a controlled shutdown of the modules, when using the remote on/off on the 'master'.

A typical circuit example with one converter being used as a 'master' and a second converter being used as a 'slave' is shown below:

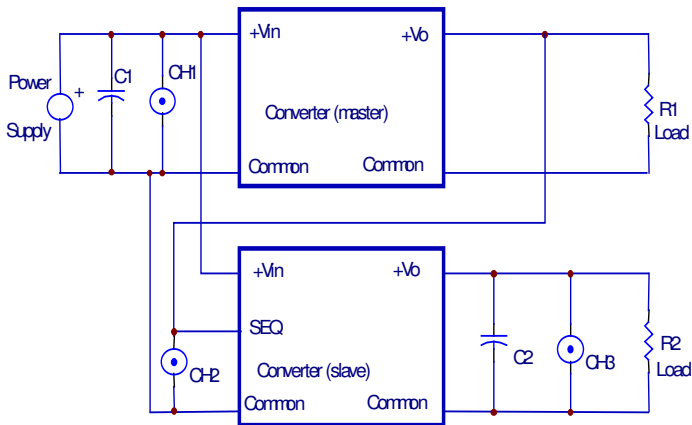


Figure 5. Example testing circuit of sequencing function

Power start up with SEQ signal
 Input Voltage=12Vdc
 Master DC/DC output voltage (CH1) = 5Vdc
 Slave DC/DC output voltage (CH2)=3.3Vdc
 Sequencing voltage = 0.67V/msec

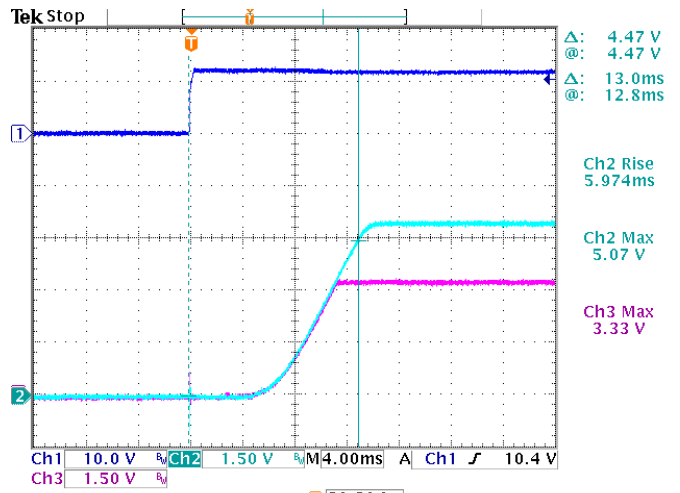


Figure 6. Sequencing Test Circuit

Power turn off with SEQ signal voltage
 Input Voltage=12Vdc (CH1)
 Master DC/DC output voltage (CH2) = 5Vdc
 Slave DC/DC output voltage (CH3)=3.3Vdc

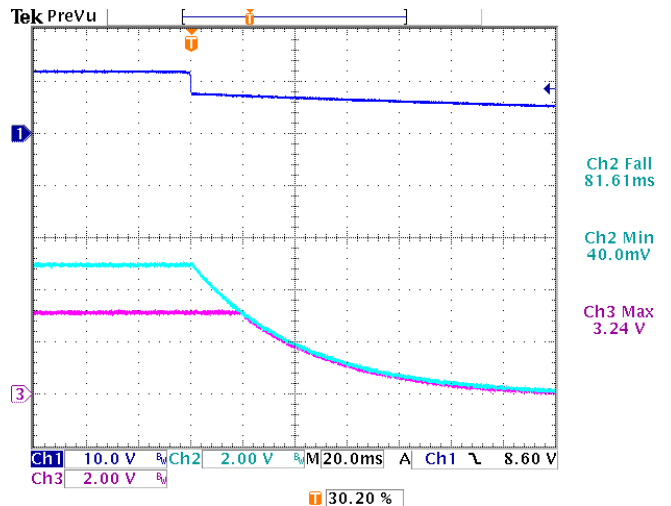


Figure 7. Sequencing Test Circuit

6. Safety

6.1 Safety

These products are approved to UL 60950-1:2003, CAN/CSA C22.2 NO.60950-1:2003 and IEC/EN60950-1:2001.

These products are designed to be PCB mounted and for use within other equipment or enclosures. For safe installation and operation, carefully follow the instructions below:

Do not install, test, or operate the products near water or spill liquid on them.

Do not operate these products unless they are securely fastened.

These products must be installed in a restricted access location accessible to authorized personnel only.

These products must be professionally installed in accordance with the prevailing electrical wiring regulations and safety standards.

The output power taken from the unit must not exceed the ratings stated in the catalog datasheet.

Ensure adequate ventilation is provided to allow air to circulate.

This product has functional insulation between input and output and therefore the DC source to this product must be reinforced or double insulated to the AC input in accordance with IEC/EN 60950-1 to achieve SELV output.

Fusing – External ceramic sand-filled fuse, 250V, **F25A**, HBC.

7. Applications

7.1 Layout Design

In optimizing thermal design the PCB is utilized as a heat sink. Some heat is transferred from the module to the main board through connecting pins. The system designer or the end user must ensure that other components and metal in the vicinity of the converter meet the spacing requirements to which the system is approved.

Low resistance and low inductance PCB layout traces are the norm and should be used where possible. Consideration must also be given to proper low impedance traces between the power module and input / output grounds. The recommended footprint is shown in figures 8 and 9.

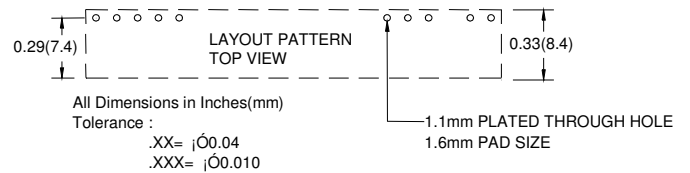


Figure 8. Recommended SIP Footprint

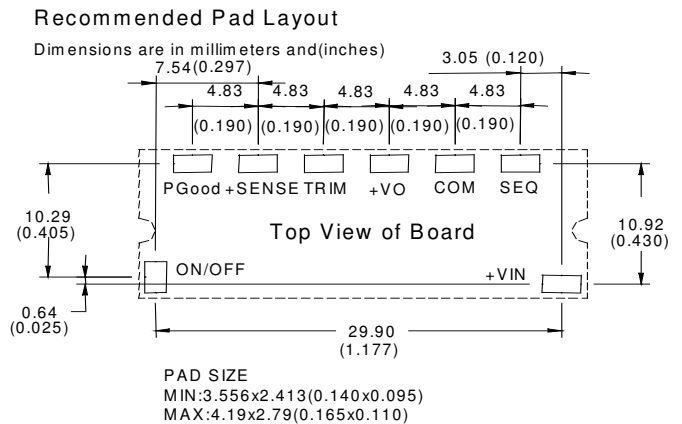
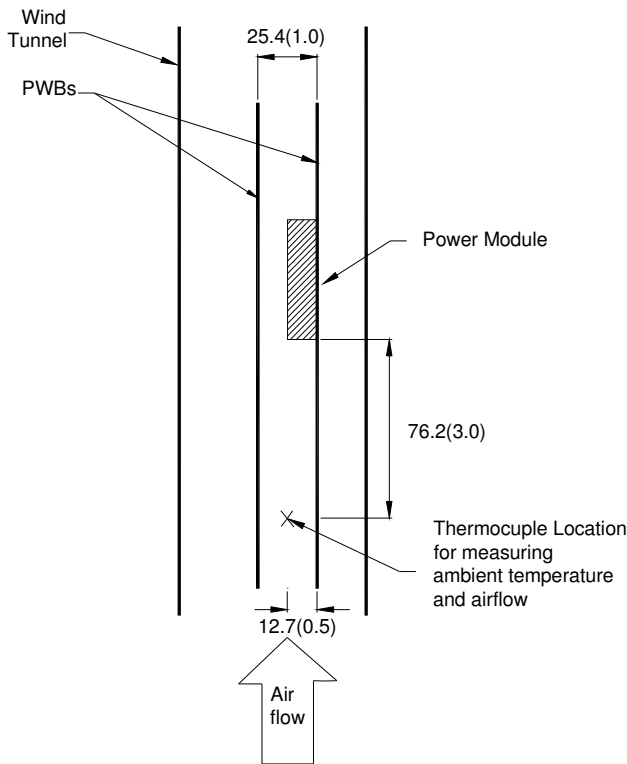


Figure 9. Recommended SMT Footprint

7.2 Convection Cooling

To predict the approximate cooling needed for the module, refer to the Power De-rating curves in Figures 13 and 14. These de-rating curves are approximations of the ambient temperatures and airflow required to keeping the power module temperature below its maximum rating. Once the module is assembled in the actual system, the module's temperature should be checked as shown in Figure 10 to ensure it does not exceed 120 °C.

Proper cooling can be verified by measuring the power module's temperature at "Tref" as shown in Figures 11 and 12.



Note: Dimensions are in millimeters and (inches)

Figure 10. Thermal Test Setup

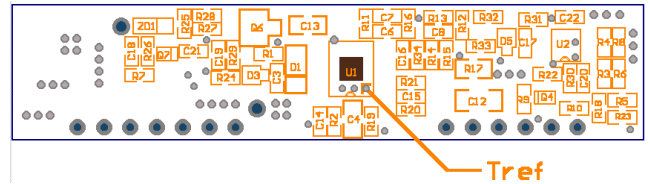
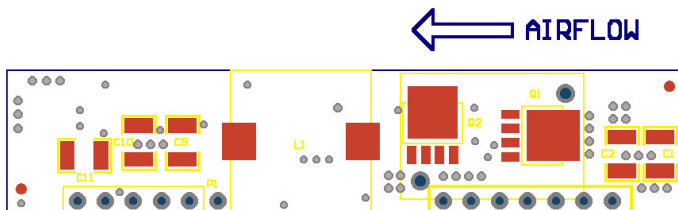


Figure 11. Temperature Measurement Location for PL20S

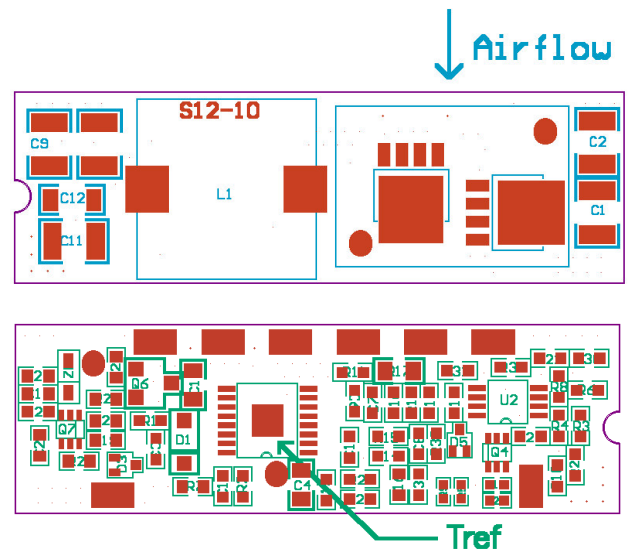


Figure 12. Temperature Measurement Location for PL20SMS

7.3 Thermal Considerations

The power module operates in a variety of thermal environments; however, sufficient cooling should be provided to help ensure reliable operation of the unit. The thermal data presented is based on measurements taken in a set-up as shown in Figure 10. Figures 13 to 14 represent the test data. Note that the airflow is parallel to the long axis of the module as shown in Figure 10 for the converters.

The temperature at "Tref" location should not exceed 120 °C. The output power of the module should not exceed the rated power for the module (VO, set x IO, max). The thermal data presented is based on measurements taken in a wind tunnel.

7.4 Power De-Rating Curves

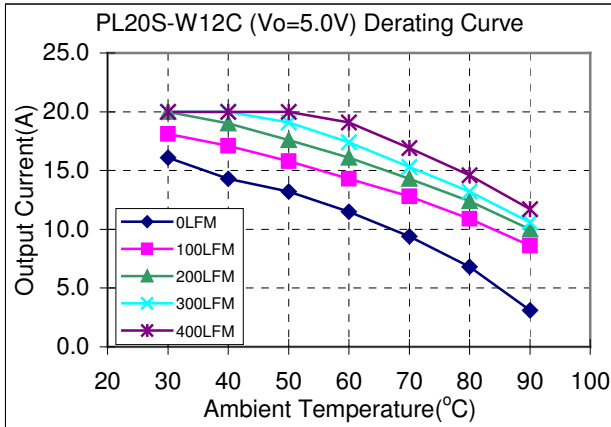


Figure 13a. Typical Power De-rating for 12V IN 5.0Vout

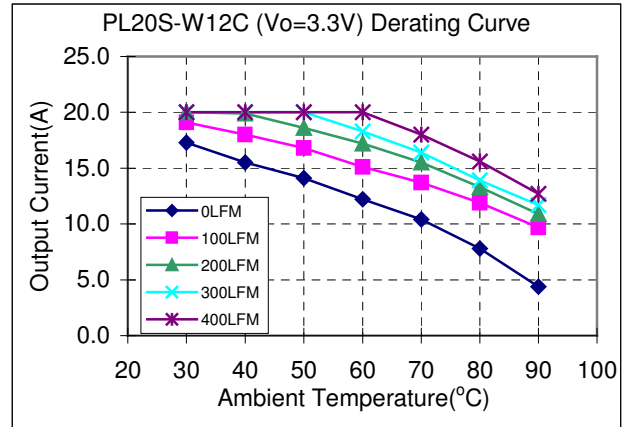


Figure 13b. Typical Power De-rating for 12V IN 3.3Vout

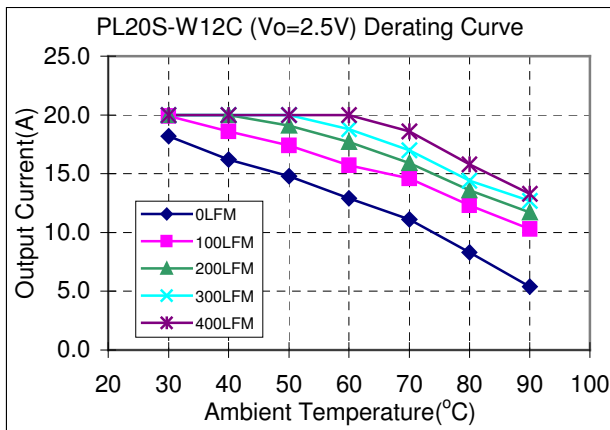


Figure 13c. Typical Power De-rating for 12V IN 2.5Vout

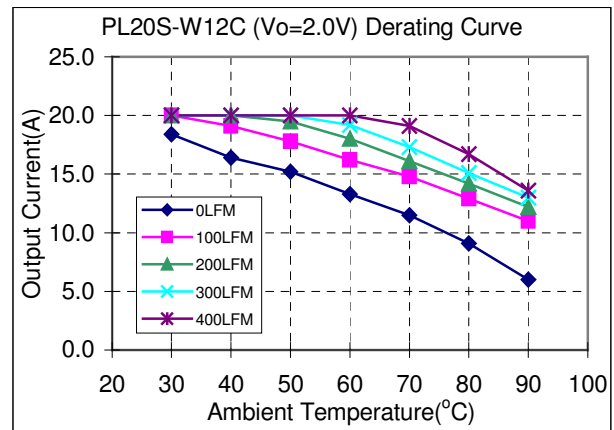


Figure 13d. Typical Power De-rating for 12V IN 2.0Vout

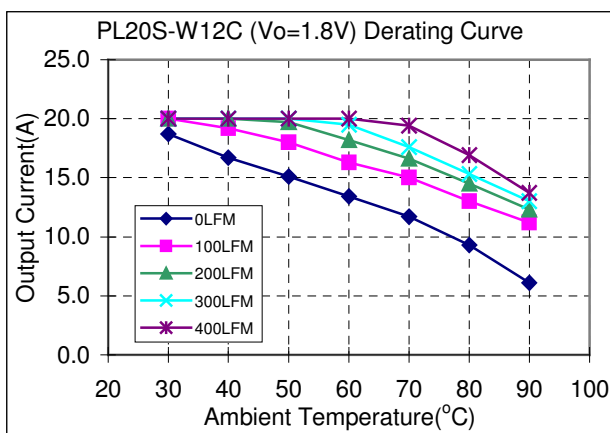


Figure 13e. Typical Power De-rating for 12V IN 1.8Vout

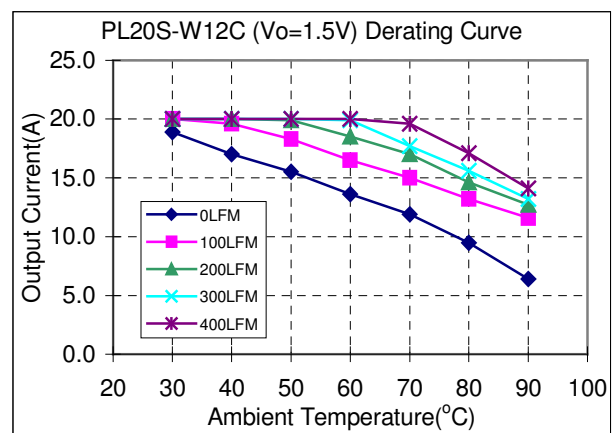


Figure 13f. Typical Power De-rating for 12V IN 1.5Vout



PL20S-W12C, PL20SMS-W12C

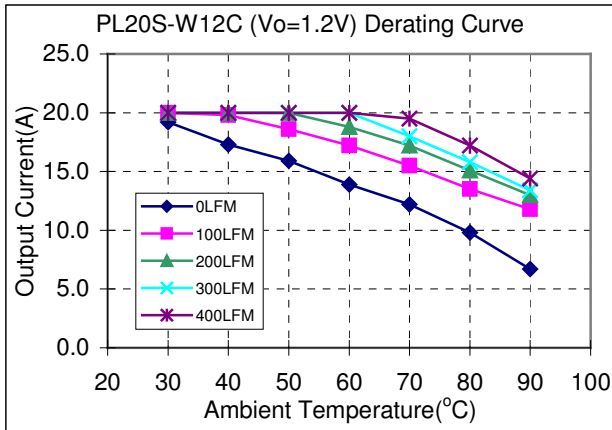


Figure13g. Typical Power De-rating for 12V IN 1.2Vout

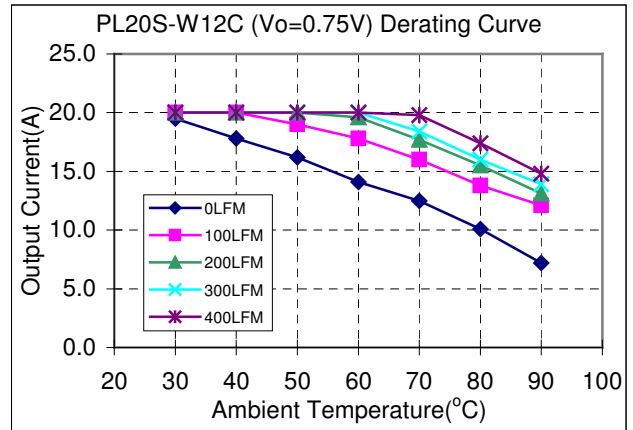


Figure 13h. Typical Power De-rating for 12V IN 0.75Vout

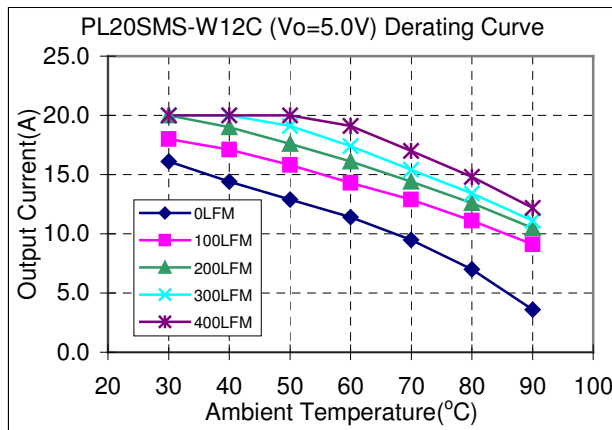


Figure14a. Typical Power De-rating for 12V IN 5.0Vout

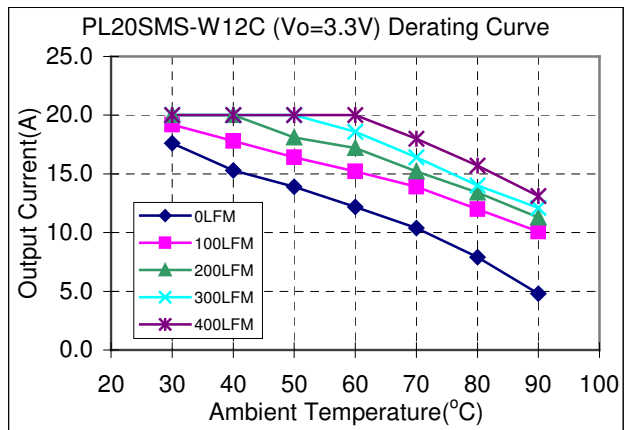


Figure 14b. Typical Power De-rating for 12V IN 3.3Vout

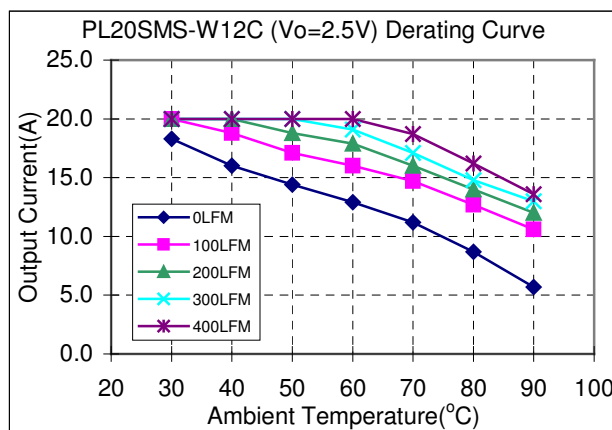


Figure14c. Typical Power De-rating for 12V IN 2.5Vout

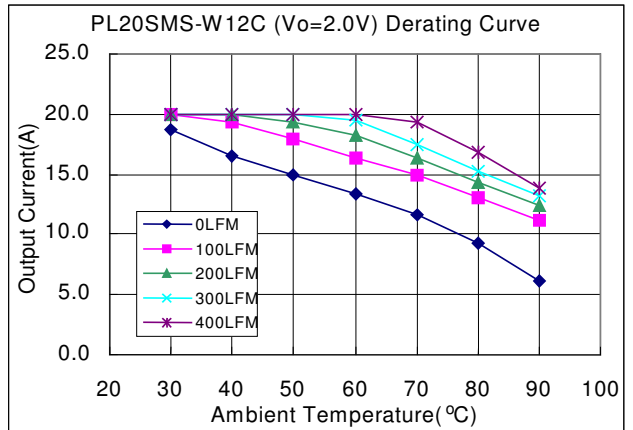


Figure 14d. Typical Power De-rating for 12V IN 2.0Vout

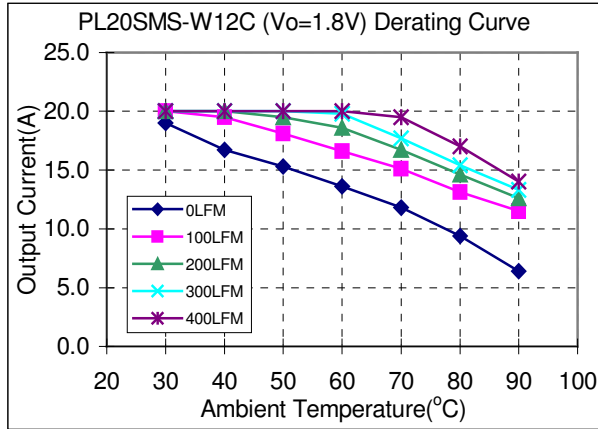


Figure 14e. Typical Power De-rating for 12V IN 1.8Vout

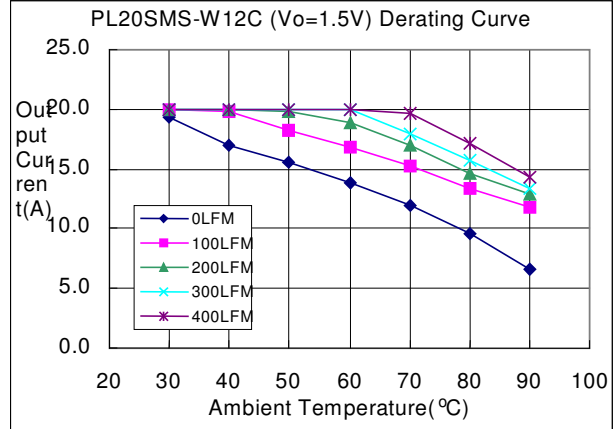


Figure 14f. Typical Power De-rating for 12V IN 1.5Vout

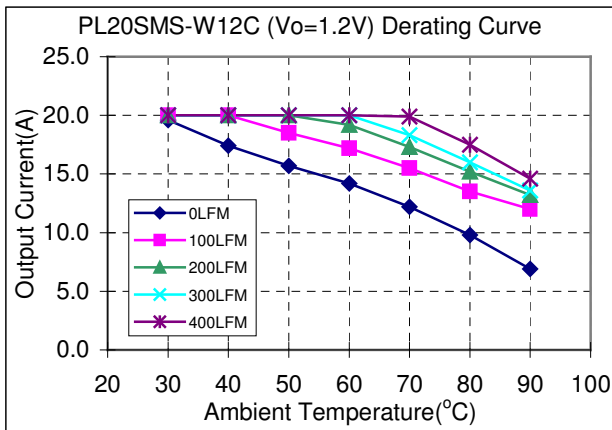


Figure 14g. Typical Power De-rating for 12V IN 1.2Vout

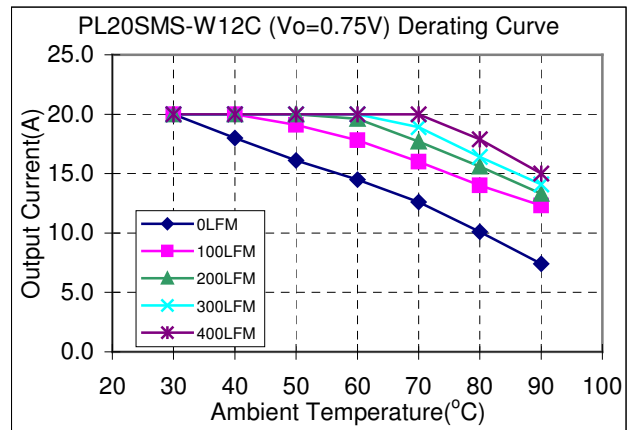
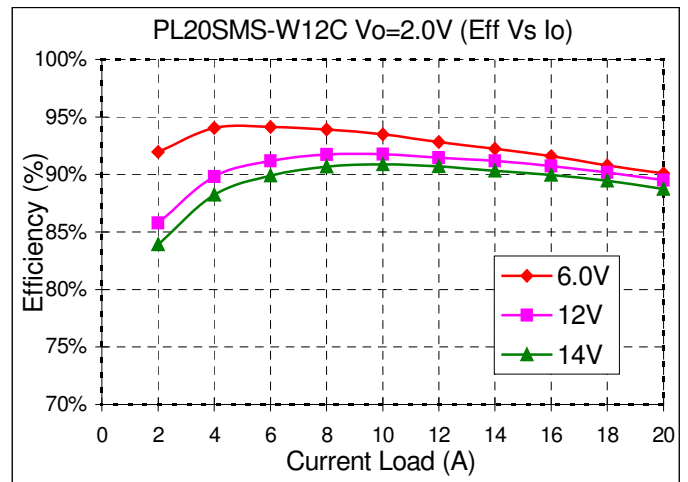
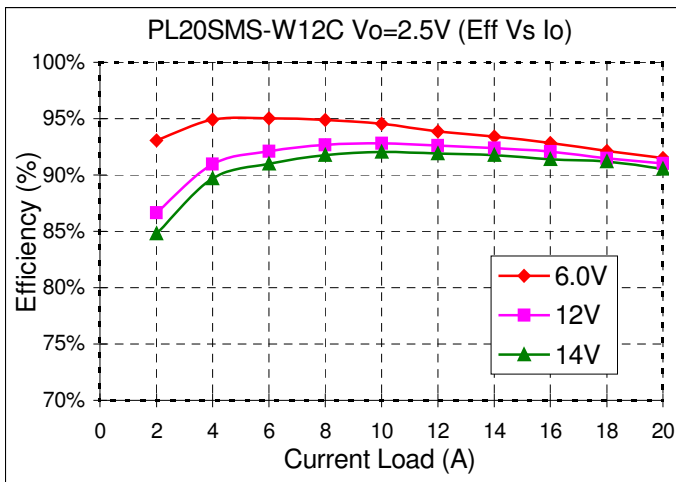
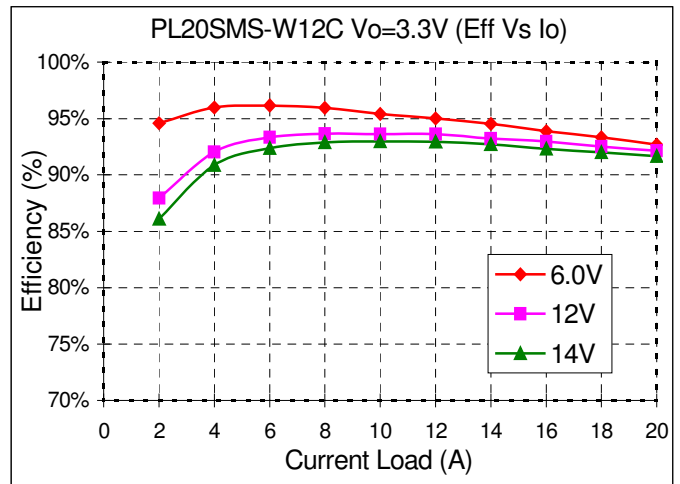
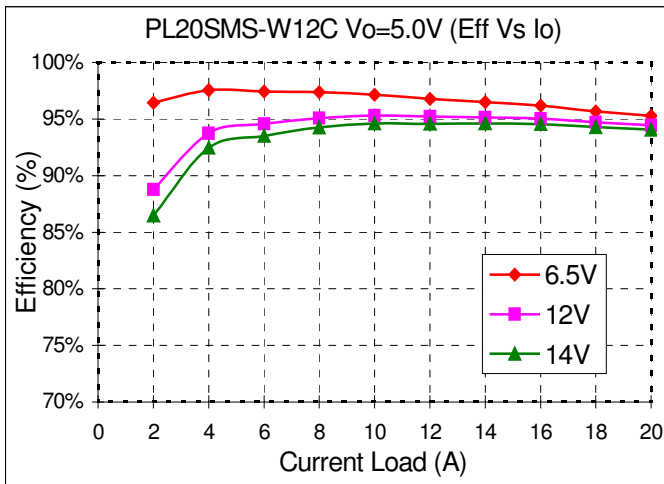


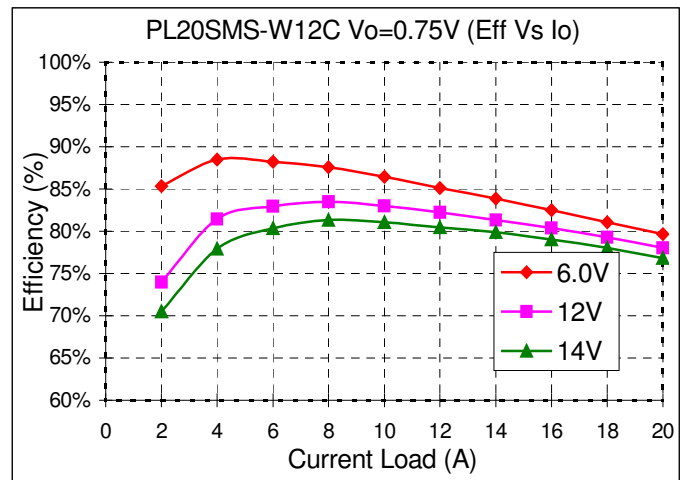
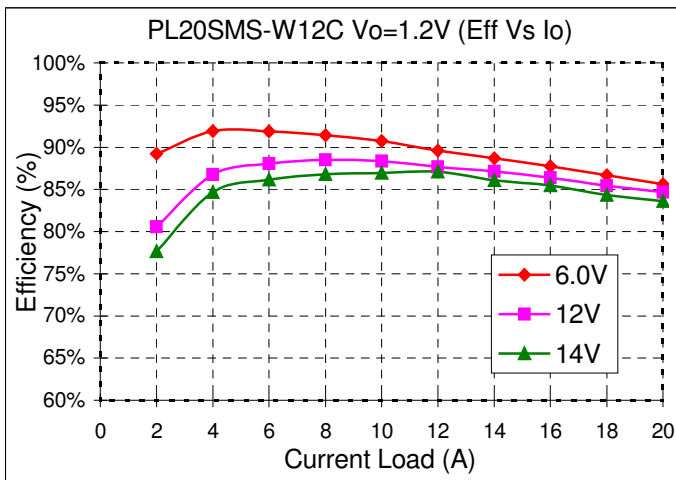
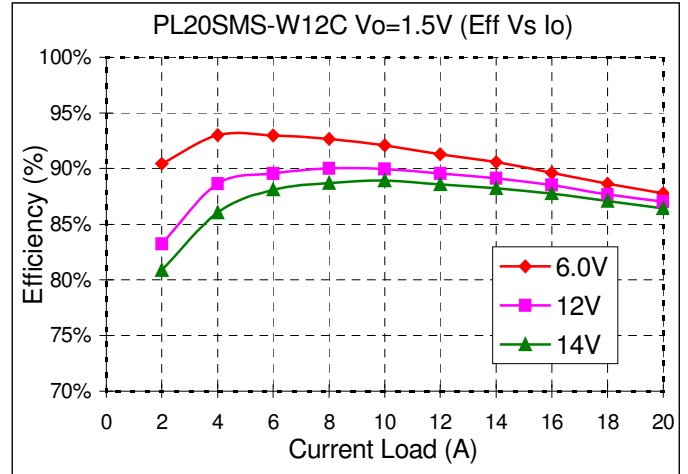
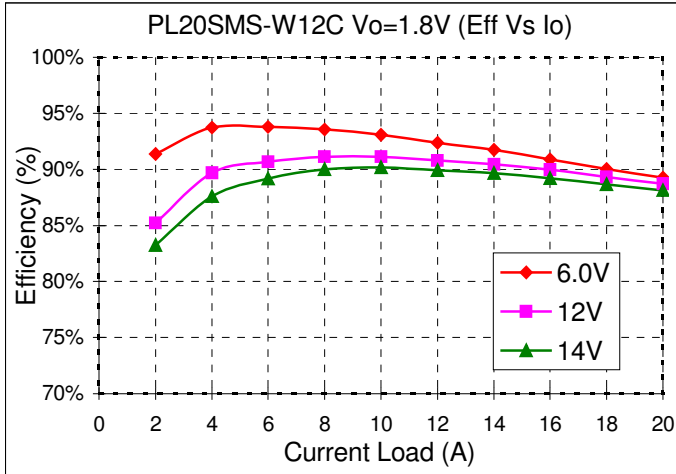
Figure 14h. Typical Power De-rating for 12V IN 0.75Vout

7.5 Efficiency vs Load Curves





PL20S-W12C, PL20SMS-W12C



7.6 Input Capacitance

The converters must be connected to a low source impedance to avoid problems with loop stability. The input capacitors should be placed close to the converter's input pins to reduce distribution inductance. Input capacitors should have a high capacitance and low ESR (typically <100m ohms) for suitable ripple handling capability. Electrolytic capacitors should be avoided. The circuit as shown in Figure 15 represents typical measurement methods for ripple current. Input reflected-ripple current is measured with a simulated source inductance of 1uH. Current is measured at the input of the module.

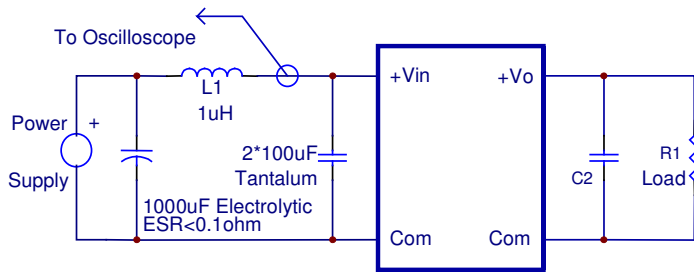


Figure 15. Input Reflected-Ripple Test Setup

7.7 Test Set-Up

The basic test set-up to measure parameters such as efficiency and load regulation is shown in Figure 16. Please note the converter is non-isolated; therefore, the input and output share a common ground. These grounds should be connected together via low impedance ground plane in the application circuit. When bench testing a converter, ensure that -Vin and -Vo are connected together via a low impedance short to ensure proper efficiency and load regulation measurements. When testing the converters under any transient conditions, ensure the transient response of the source is sufficient to power the equipment under test. We can calculate the

- Efficiency
- Load regulation and line regulation.

The value of efficiency is defined as:

$$\eta = \frac{V_o \times I_o}{V_{in} \times I_{in}} \times 100\%$$

Where: V_o is output voltage,
 I_o is output current,
 V_{in} is input voltage,
 I_{in} is input current.

The value of load regulation is defined as:

$$Load.reg = \frac{V_{FL} - V_{NL}}{V_{NL}} \times 100\%$$

Where: V_{FL} is the output voltage at full load
 V_{NL} is the output voltage at no load

The value of line regulation is defined as:

$$Line.reg = \frac{V_{HL} - V_{LL}}{V_{LL}} \times 100\%$$

Where: V_{HL} is the output voltage of maximum input voltage at full load.
 V_{LL} is the output voltage of minimum input voltage at full load.

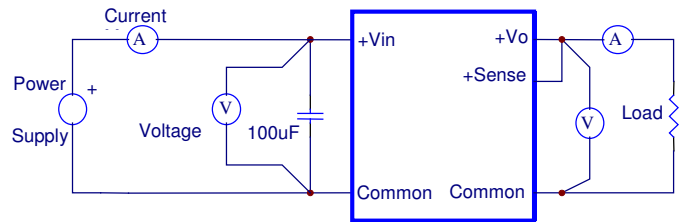
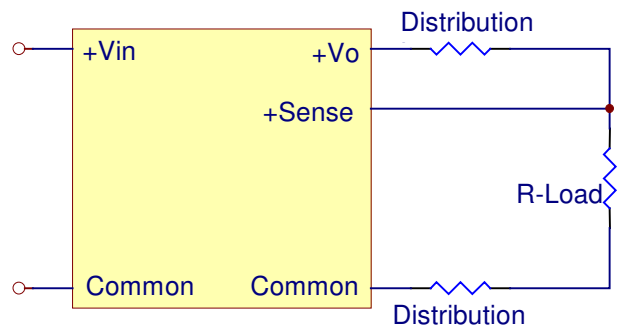


Figure 16. Test Setup

7.8 Remote Sense Compensation

The use of Remote Sense helps maintain the proper output voltage at the load. It minimizes the effects of distribution losses such as drops across the connectors and PCB traces (see Figure 17). The maximum drop from the output pin to the load should not exceed 500mV for remote sense compensation to work. When the Remote Sense feature is not being used, the remote sense pin should be disconnected.

Figure 17. Circuit Configuration for Remote Sense Operation



7.9 Output Voltage Adjustment

The output voltage of the converters can be adjusted over the range of 0.7525V to 5.0V by adding an external (shown as Rtrim) in Figure 18. When the Trim resistor is not connected the output voltage defaults to 0.7525V. The amount of power delivered by the module is defined as the output voltage multiplied by the output current (Vo x Io).

When using TRIM UP, the output voltage of the module will increase. If the same output current is maintained, the output power of the module will increase. Make sure that the maximum output power of the module remains at or below the maximum rated power.

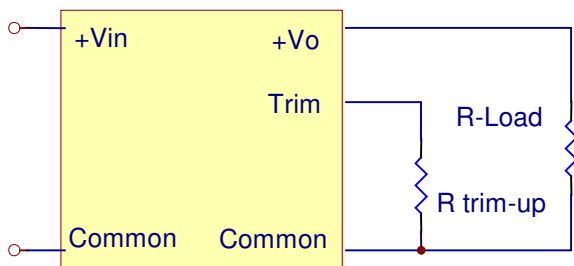


Figure 18. Trim-up Voltage Setup

The value of Rtrim-up defined as:

$$R_{trim} = \left(\frac{10500}{V_o - 0.7525} - 1000 \right)$$

Where:

Rtrim-up is the external resistance in ohms.

Vo is the desired output voltage.

To give an example of the above calculation, to set a voltage of 3.3Vdc, Rtrim is given by:

$$R_{trim} = \left(\frac{10500}{3.3 - 0.7525} - 1000 \right)$$

Rtrim = 3.122K ohm

For various output voltages, the resistance values are provided in Table 3.

Vo,set (V)	Rtrim (kohm)
0.7525	Open
1.2	22.46
1.5	13.05
1.8	9.024
2.0	7.417
2.5	5.009
3.3	3.122
5.0	1.472

Table 3 – Trim Resistor Values

7.10 Output Ripple and Noise Measurement

The test set-up for noise and ripple measurements is shown in Figure 19. A coaxial cable with a 50 ohm termination was used to prevent impedance mismatches. The Output Ripple & Noise is measured with 1uf ceramic and 10uf tantalum capacitors. The location for measurement is 50mm to 75mm (2" to 3") from the module. Capacitor "C1" is a 200uF tantalum capacitor with an ESR < 25mΩ.

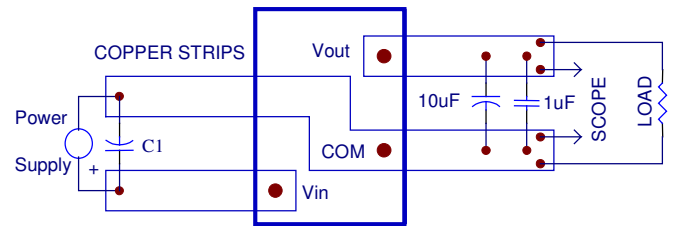


Figure 19. Output Voltage Ripple and Noise Measurement Set-Up

7.11 Output Capacitance

Lambda's converters provide stability with or without external capacitors. For good transient response low ESR output capacitors should be located close to the point of load.

For high current applications point has already been made in layout considerations for low resistance and low inductance tracks.

Output capacitors with its associated ESR values have an impact on loop stability and bandwidth. The converters are designed to work with load capacitance up-to 8,000uF. It is recommended that any additional capacitance, typically 1,000uF and low ESR (<20mohm), be connected close to the point of load and outside the remote compensation point.

7.12 PL20SMS-W12C Reflow Profile

An example of the SMS reflow profile is given in Figure 20.

Equipment used: SMD HOT AIR REFLOW HD-350SAR

Alloy: AMQ-M293TA or NC-SMQ92 IND-82088 SN63

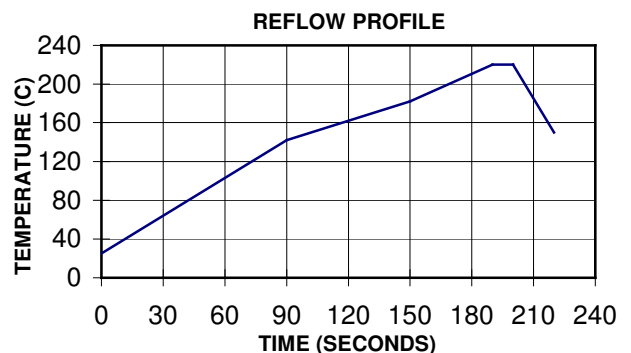


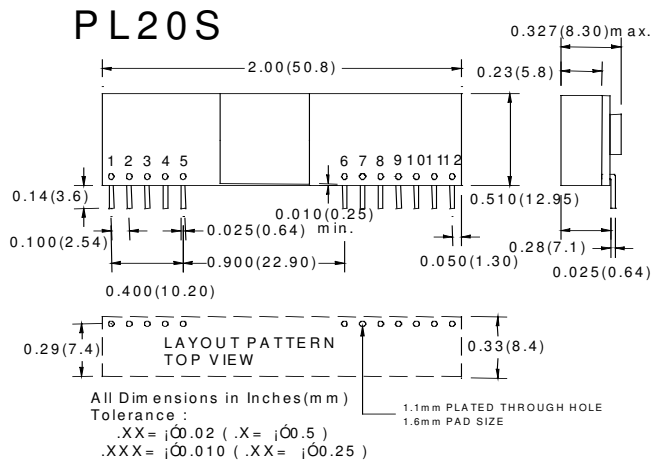
Figure 20 SMS Reflow Profile

8. Mechanical Outline Diagrams

8.1 Outline Diagrams

Dimensions are in millimeters and inches

Tolerance: x.xx ±0.02 in. (0.5mm), x.xxx ±0.010 in. (0.25 mm) unless otherwise noted



PIN CONNECTION	
Pin	FUNCTION
1	+Output
2	+Output
3	+Sense
4	+Output
5	Common
6	No Pin / PGood
7	Common
8	+V Input
9	+V Input
10	Sequencing
11	Trim
12	On/Off Control

Figure 21 Mechanical Outline Diagram

BOTTOM VIEW OF BOARD

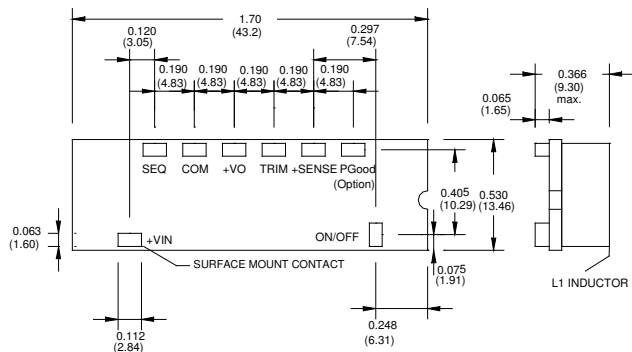
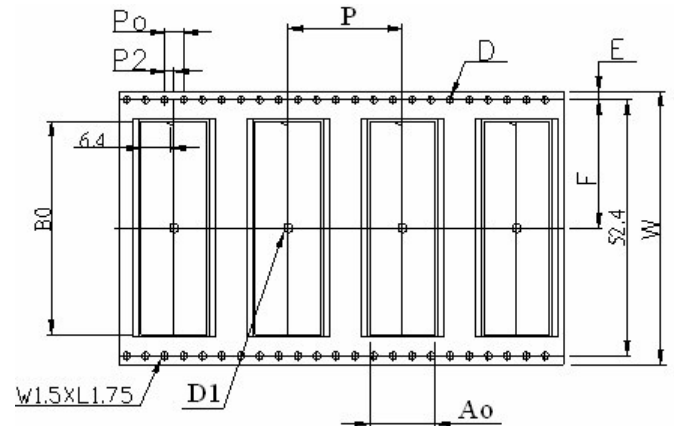


Figure 22 Mechanical Outline Diagram

8.2 SMS Tape and Reel Dimensions

The Tape Reel dimensions for the SMS module is shown in Figure 23.



ITEM	SPEC
W	56.00 ^{+0.30} _{-0.30}
Ao	13.80 ^{+0.10} _{-0.10}
Bo	43.7 ^{+0.10} _{-0.10}
Ko	9.50 ^{+0.10} _{-0.10}
P	24.00 ^{+0.10} _{-0.10}
F	26.20 ^{+0.10} _{-0.10}
E	1.75 ^{+0.10} _{-0.10}
D	1.50 ^{+0.10} _{-0.00}
D1	2.00 ^{+0.25} _{-0.00}
Po	4.00 ^{+0.10} _{-0.10}
P2	2.00 ^{+0.10} _{-0.10}
t	0.40 ^{+0.05} _{-0.05}

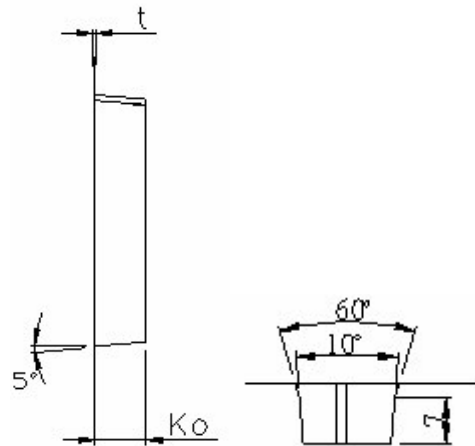


Figure 23 – SMS Tape and Reel Dimensions