



Industrial



Cots



Comm

## 120W Industrial Quarter Brick Converters



Features	Benefits
• Standard Quarter Brick Footprint	• Assists System Integration
• 9-36, 18-36VDC Inputs	• Designed for 28V DC Networks
• Up to 91.5% Efficiency	• Easier System Thermal Management
• Up to 105°C Baseplate Temperatures	• Suitable for Conduction Cooling
• 1,500VDC Isolation (2,250VDC or 3,000VDC option)	• For Rugged Environments

Specification							
Model		GQA120					
Nominal Output Voltage (1)	VDC	5V	12V	15V	24V	28V	48V
Input Voltage Range	VDC	9 - 36V					18 - 36V
Input Current (Maximum)	A	17A					10A
Efficiency (100% load, 24V input)	%	90%	89%	89%	87%	89%	91.5%
Output Voltage Adjustment	VDC	4.5 - 5.5V	10.8 - 13.2V	13.5 - 16.5V	21.6 - 26.4V	25.2 - 30.8V	45.6 - 52.8V
Ripple & Noise (max) pk-pk	mV	150mV	180mV	200mV	250mV	250mV	300mV
Line Regulation (typ)	%	0.05%	0.05%	0.05%	0.05%	0.05%	0.05%
Load Regulation (max)	%	0.03%	0.03%	0.03%	0.03%	0.03%	0.03%
Overcurrent Protection (typ)	A	37A	14.5A	12A	6.2A	5.1A	4A
Overvoltage Protection (typ)	V	6.5V	15V	18V	32V	35V	54V
Remote On/Off	-	Yes; Low = ON, Open = OFF					
Remote Sense	-	Yes			Not as standard		
Operating Temperature	°C	-40°C to +105°C					
Storage Temperature	°C	-55°C to +125°C					
Temperature regulation	%	0.5% across full temperature range					
Cooling	-	Conduction, convection or forced air					
Withstand Voltage	VDC	Input to Output 1,500VDC (-NP7 suffix: 2,250VDC, -OP7 suffix: 3,000VDC), Baseplate to Input or Output 1,500VDC. (-NP7 & -OP7 suffix: 2,250VDC)					
Isolation Resistance	MΩ	>10MΩ					
Safety Agency Certifications	-	IEC/EN/UL/CSA 62368-1, IEC/EN/UL/CSA 60950-1, CE Mark					
Weight (Typ)	g	85g (Flanged baseplate, open frame)					
Size (LxWxH)	mm	Flanged version: 60.6 x 49.5 x 12.7 Non-flanged version: 60.6 x 39.5 x 12.7					
Warranty	yrs	3					

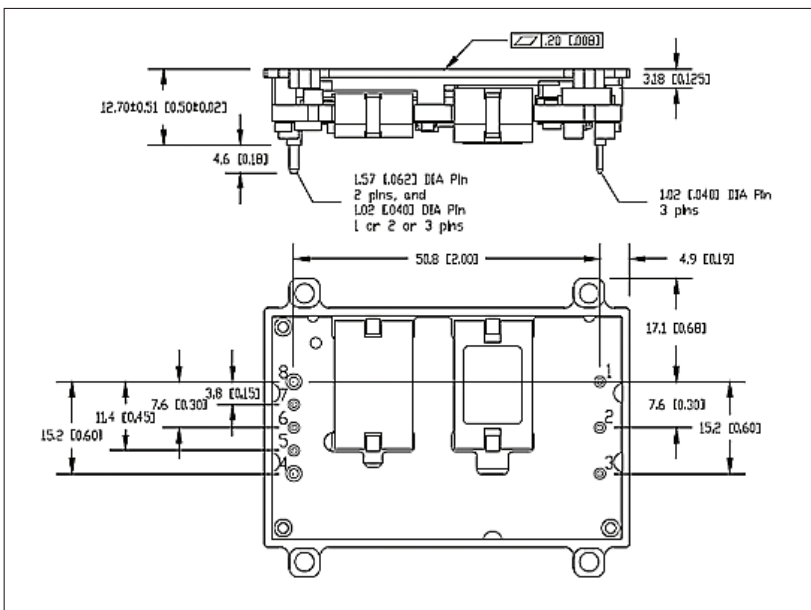
**Notes:** See Installation Manual for full details, test methods of parameters and application notes

(1) Up to 50V input transient for 1 second

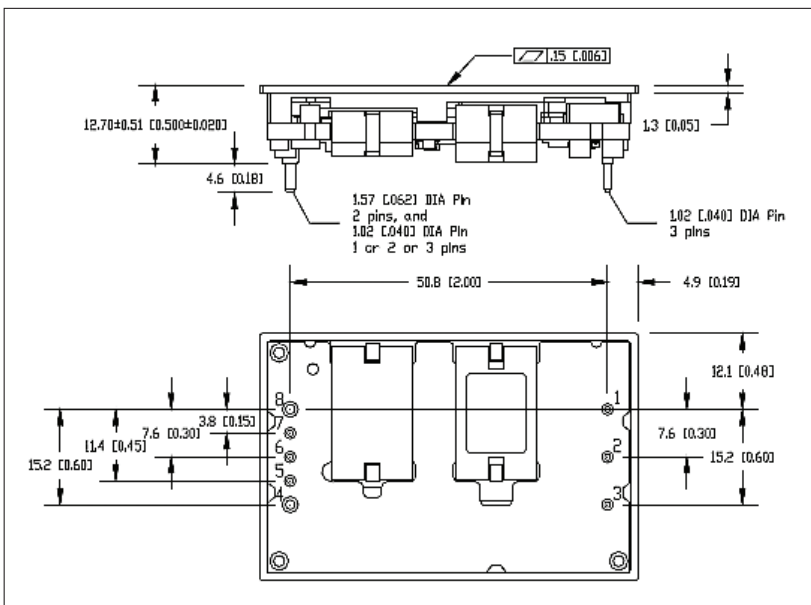
## Model Selector

Model	Input Voltage (V)	Output Voltage (V)	Maximum Current (A)	Maximum Power (W)
GQA2W024A050V-007-R	9 - 36	5	24	120
GQA2W010A120V-007-R	9 - 36	12	10	120
GQA2W008A150V-007-R	9 - 36	15	8	120
GQA2W005A240V-007-R	9 - 36	24	5	120
GQA2W004A280V-007-R	9 - 36	28	4.28	120
GQA24003A480V-007-R	18 - 36	48	2.5	120

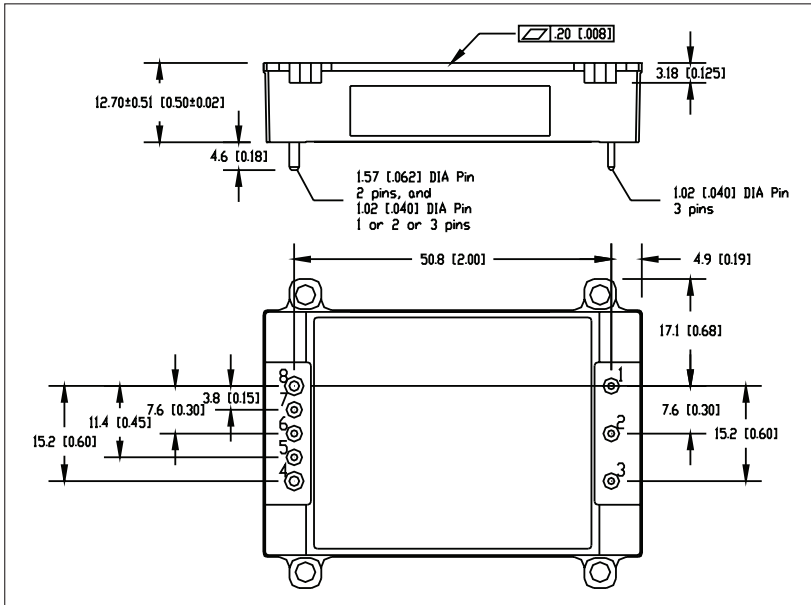
## Flange Baseplate, Open Frame GQA120 Series



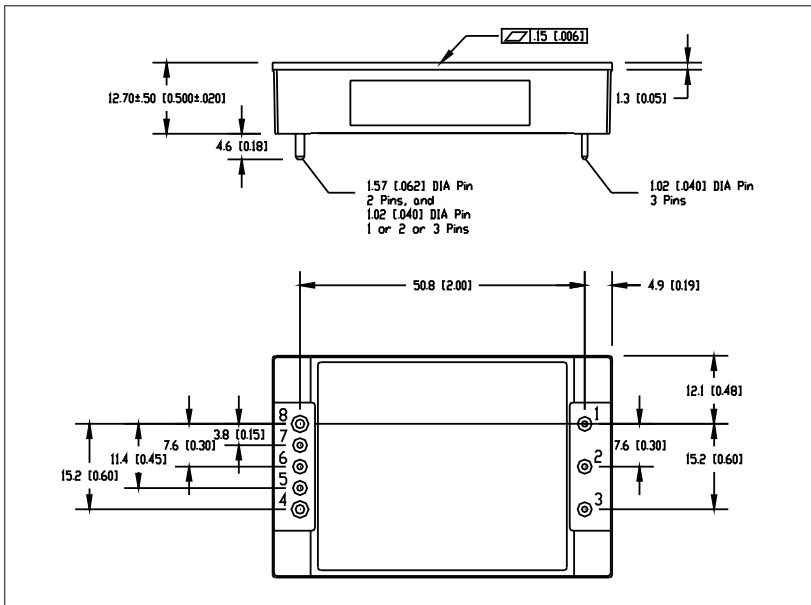
## Non-Flange Baseplate, Open Frame GQA120 Series



## With Flange, Potted GQA120 Series



## No Flange, Potted GQA120 Series



### Options

Suffix	Description
--------	-------------

-007-R	Flanged Baseplate, Open Frame
-N07-R	Non-Flanged Baseplate, Open Frame
-0P7-R	Flanged Baseplate, Enclosed with Potting, 3kV Input to Output Isolation
-NP7-R	Non-Flanged Baseplate, Enclosed with Potting

### Standard Model

Notes: \*Contact factory for other Voltages or option codes

### Pin Assignment

PIN	Function
1	Vin (+)
2	On / Off
3	Vin (-)
4	Vo (-)
5	Sense (-), select models
6	Trim
7	Sense (+), select models
8	Vo (+)



## TDK-Lambda France SAS

3 Avenue du Canada  
Parc Technopolis  
Bâtiment Sigma  
91940 les Ulis  
France  
Tel: +33 1 60 12 71 65  
Fax: +33 1 60 12 71 66  
france@fr.tdk-lambda.com  
www.emea.lambda.tdk.com/fr



## Italy Sales Office

Via Giacomo Matteotti 62  
20092 Cinisello Balsamo (MI)  
Italy  
Tel: +39 02 61 29 38 63  
Fax: +39 02 61 29 09 00  
info.italia@it.tdk-lambda.com  
www.emea.lambda.tdk.com/it



## Netherlands

info@nl.tdk-lambda.com  
www.emea.lambda.tdk.com/nl



## TDK-Lambda Germany GmbH

Karl-Bold-Strasse 40  
77855 Achern  
Germany  
Tel: +49 7841 666 0  
Fax: +49 7841 5000  
info.germany@de.tdk-lambda.com  
www.emea.lambda.tdk.com/de



## Austria Sales Office

Aredstrasse 22  
2544 Leobersdorf  
Austria  
Tel: +43 2256 655 84  
Fax: +43 2256 645 12  
info@at.tdk-lambda.com  
www.emea.lambda.tdk.com/at



## Switzerland Sales Office

Eichtalstrasse 55  
8634 Hombrechtikon  
Switzerland  
Tel: +41 44 850 53 53  
Fax: +41 44 850 53 50  
info@ch.tdk-lambda.com  
www.emea.lambda.tdk.com/ch



## Nordic Sales Office

Haderslevvej 36B  
DK-6000 Kolding  
Denmark  
Tel: +45 8853 8086  
info@dk.tdk-lambda.com  
www.emea.lambda.tdk.com/dk



## TDK-Lambda UK Ltd.

Kingsley Avenue  
Ilfracombe  
Devon EX34 8ES  
United Kingdom  
Tel: +44 (0) 12 71 85 66 66  
Fax: +44 (0) 12 71 86 48 94  
powersolutions@uk.tdk-lambda.com  
www.emea.lambda.tdk.com/uk



## TDK-Lambda Ltd.

1 Alexander Yanai  
Segula  
Petah-Tikva  
Israel  
Tel: +9 723 902 4333  
Fax: +9 723 902 4777  
info@tdk-lambda.co.il  
www.emea.lambda.tdk.com/il



## C.I.S.

**Commercial Support:**  
Tel: +7 (495) 665 2627  
**Technical Support:**  
Tel: +7 (812) 658 0463  
info@tdk-lambda.ru  
www.emea.lambda.tdk.com/ru

## Local Distribution

