

# Series PR



# 750

**WATTS  
RECTIFIER**

**RECTIFIER MODULE  
AC/DC**

**Low profile**

**AC Fail signal**

**DC Power on signal**

The PR module is an AC/DC rectifier compatible with all PH Series DC/DC models having an input voltage of 280VDC.

## PR500-280

### INPUT

Input voltage	85-132VAC	170-265VAC
Input frequency	47 to 440Hz	
Input current	8.8A	6.6A
Inrush current	Limited by external resistor	

### OUTPUT

Output voltage	280VDC (230 to 370VDC)	
Output current	2.10A	3.15A
Output power	500W	750W
Alarm	Signal AC fail (ACF terminal)	

### GENERAL

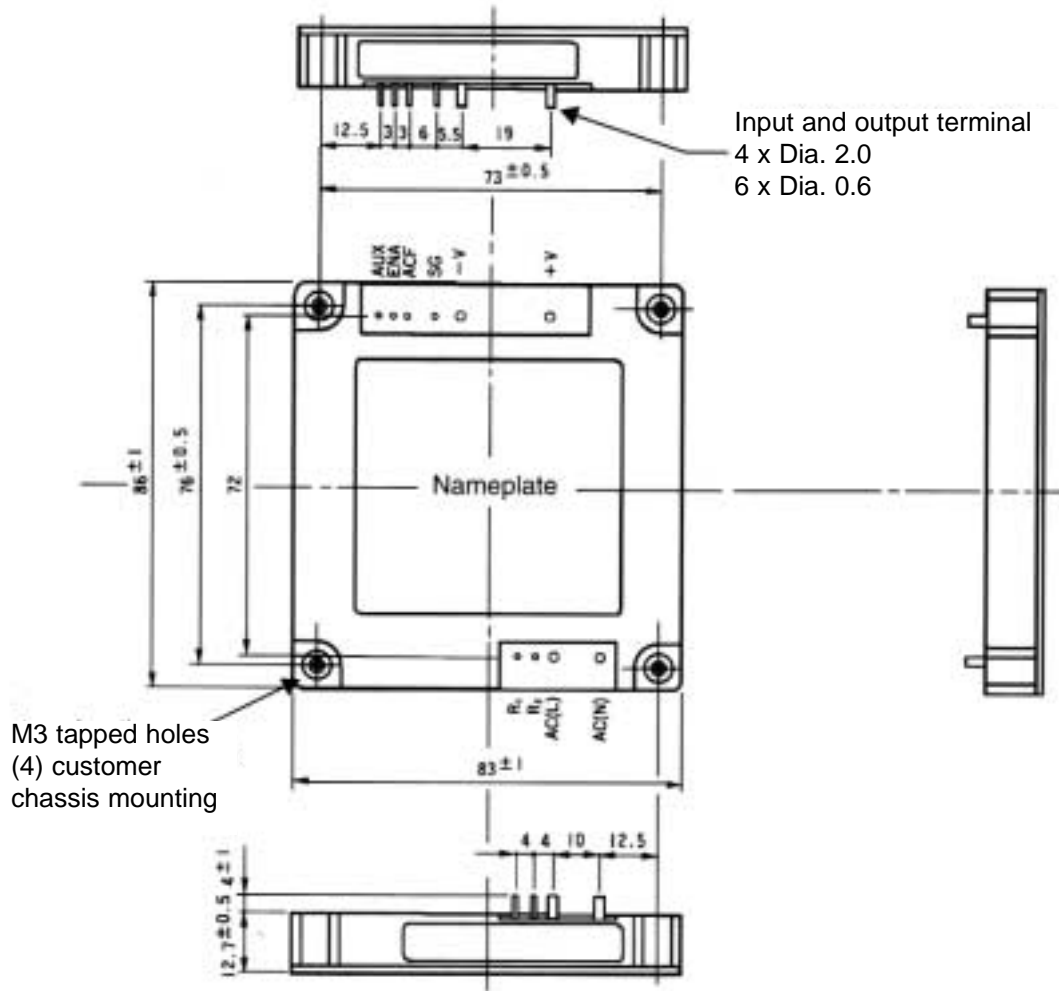
Efficiency (typ)	95%
Cooling	Conducted
Voltage isolation (for 1 minute)	Terminal - 3.0kVAC@ 20mA
Isolation resistance	More than 100MOhms to 500VDC Terminals - Baseplate

### ENVIRONMENTAL

Operating temperature	-20°C to +85°C baseplate
Storage temperature	-40°C to +85°C
Shock	<20G
Vibration (non operational)	10 to 55Hz amplitude(1 minute sweep) max. 5G X, Y, Z. 1 hour each
Conformity	UL1950, CSA234, EN60950, EN41003, BABT, CE marked for LVD
Dimensions (l x H x L)	83 x 12.7 x 86mm
Weight	90g

# PHYSICAL SPECIFICATIONS

PR 500



**NB :** This is an image of the product as seen from below, not above.  
All measurements are in mm.