

- Small Size & Lightweight
- PCB Board Mountable
- Low Cost
- Universal Input Voltage
- RoHS Compliant

## KPS Series

5 to 15W AC-DC

Board Mount Power Supplies

### Key Market Segments & Applications

- Factory Automation
- Telecom
- Datacom
- Printers and motor drives
- Instruments

### KPS Features and Benefits

#### Features

- Small Size
- Wide Input Range
- No External Components Needed

#### Benefits

- Minimises PCB Space
- Global use with no manual intervention
- Easy to use

Specifications		KPS-5	KPS-10	KPS-15
ITEMS	MODEL			
Input Voltage range		85 - 264VAC (47 - 440Hz) or 110 - 370VDC		
Inrush Current (115 / 230VAC)	A		20 / 40	
Input Current (115/230VAC)	A	0.13 / 0.07	0.27 / 0.13	0.4 / 0.2
Temperature Coefficient			±0.05%/°C	
Voltage Accuracy			±1%	
Minimum Load	A		None	
Load Regulation			±1% (10% to 100% load)	
Line Regulation (1)			±0.5%	
Ripple & Noise (2)	mV		1% or 50mV whichever is greater	
Short Circuit Protection	-		Continuous - hiccup mode	
Overvoltage Protection	V		130-150%	
Hold Up Time (Typ@115VAC)	ms	8	16	16
LED Indicator			Green LED = OK	
Operating Temperature			0 to +70°C with derating	
Storage Temperature			-20 to +85°C	
Humidity (non condensing)			10 - 95% RH	
Cooling			Convection	
Withstand Voltage			Input to Output 3kVAC	
Vibration (non operating)		23.52m/s <sup>2</sup> (10 - 55Hz: constant sweep 1 min X, Y, Z for 1 hour)		
Shock		< 196.1 m/s <sup>2</sup> (20G)		
Safety Agency Approvals	-	UL60950-1, CSA60950-1, EN60950-1 Class II, CE Mark		
Conducted & Radiated EMI		EN55022-B, FCC Class B		
Immunity		EN61000-4 -2, -3, -4, -5, -6		
Weight (Typ)	g	29g	60g	80g
Size (WxLxH; H above pcb)	mm	55 X 35 X 20	64 X 45 X 23	70 X 48 X 23
Warranty		2 Year		

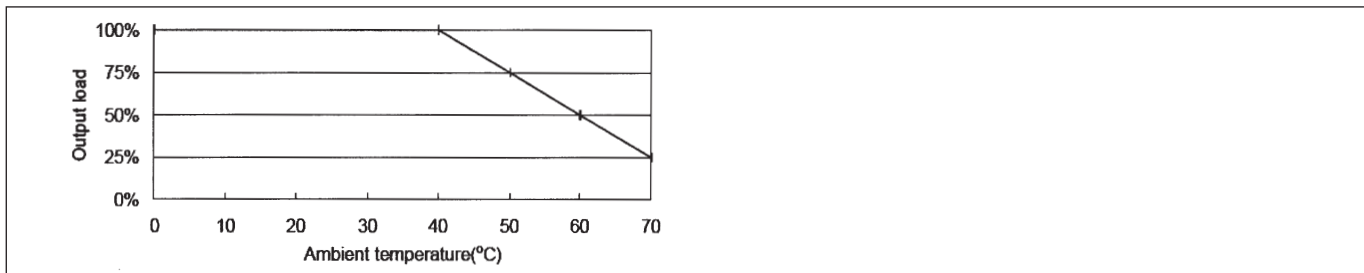
#### Notes:

(1) KPS-5 Measured from 100 - 240VAC (2) Measured with 0.1uF ceramic & 10uF electrolytic at 20MHz BW

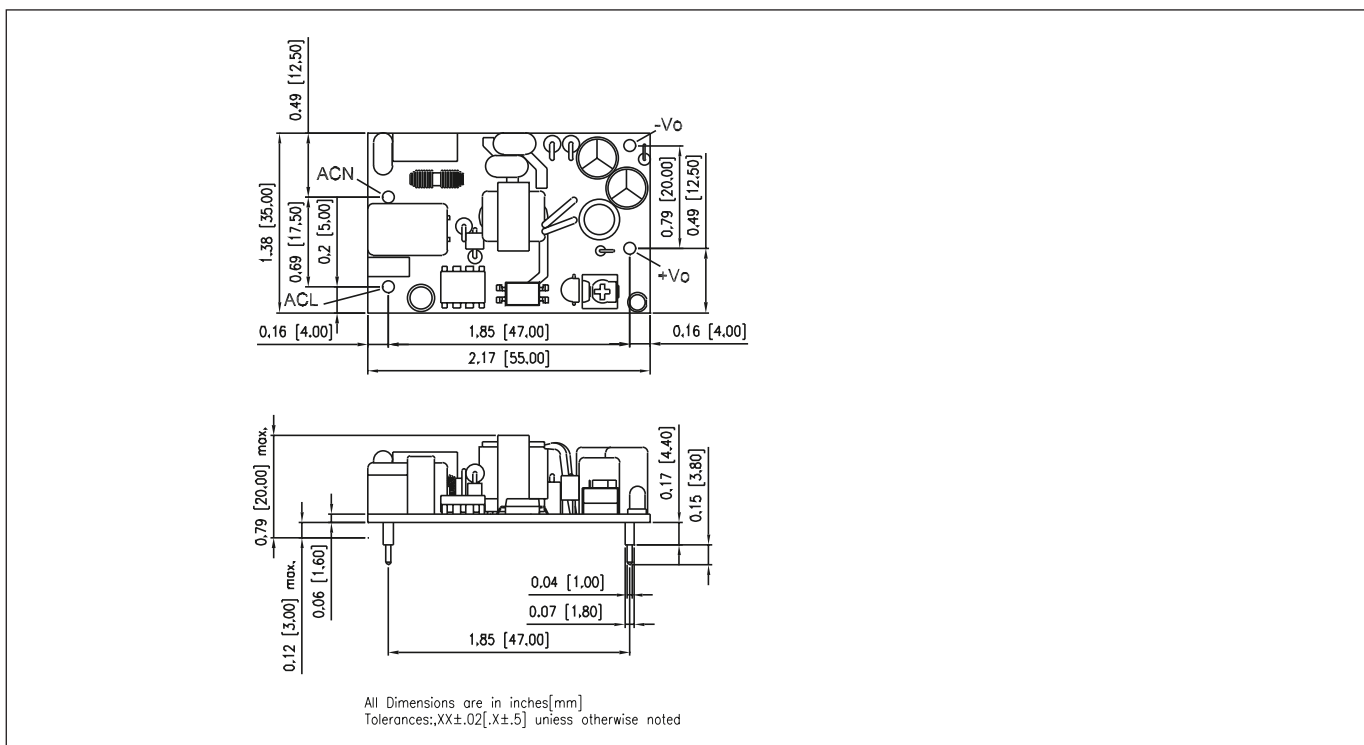
**Model Selector**

Model	Output Voltage (V)	Maximum Output (A)	Peak Load (A)	Output Pwr (W)	Eff (typ)%
KPS5-3R3	3.3	1.25	-	4.1	70
KPS5-5	5.0	1.00	-	5.0	70
KPS5-12	12.0	0.42	-	5.0	70
KPS5-15	15.0	0.33	-	5.0	70
KPS5-24	24.0	0.23	-	5.5	77
KPS10-3R3	3.3	2.50	3.80	8.3	65
KPS10-5	5.0	2.00	2.80	10.0	70
KPS10-12	12.0	0.84	1.20	10.1	75
KPS10-15	15.0	0.67	1.00	10.1	75
KPS10-24	24.0	0.42	0.65	10.1	78
KPS15-3R3	3.3	3.00	4.50	9.9	70
KPS15-5	5.0	3.00	4.50	15.0	73
KPS15-12	12.0	1.25	1.80	15.0	80
KPS15-15	15.0	1.00	1.50	15.0	80
KPS15-24	24.0	0.63	0.95	15.1	82

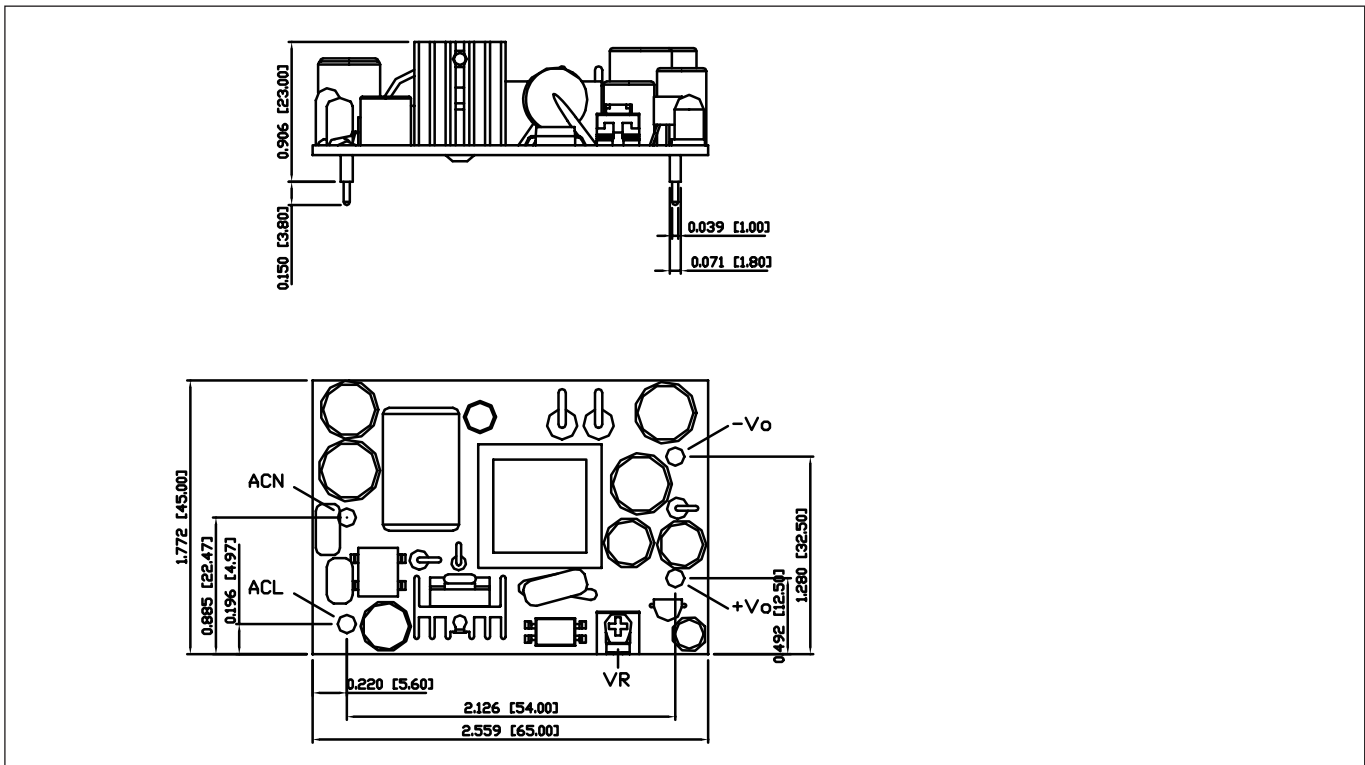
**Derating Curve KPS Series**



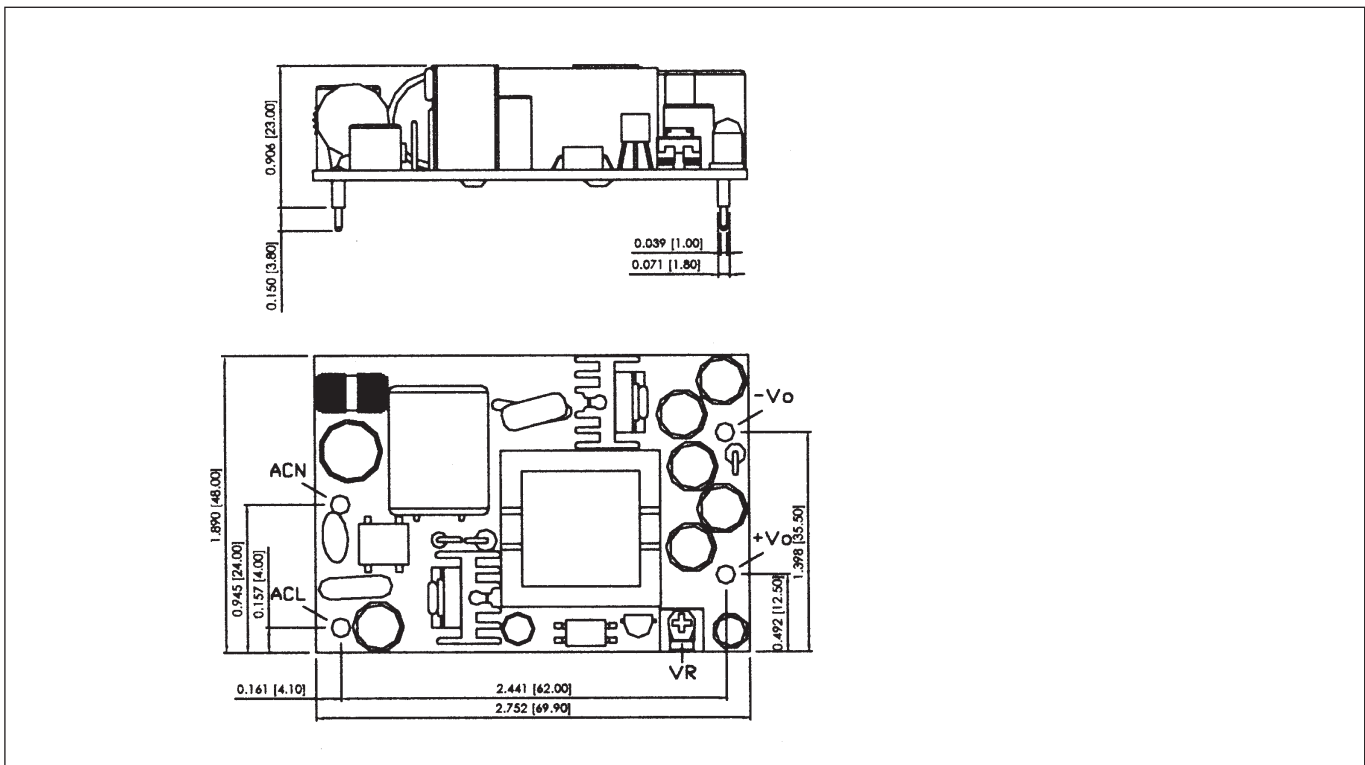
**Outline Drawing KPS5 Series**



## Outline Drawing KPS10 Series



## Outline Drawing KPS15 Series



**TDK-LAMBDA EMEA**

[www.emea.tdk-lambda.com](http://www.emea.tdk-lambda.com)



**TDK-Lambda France SAS**

Route de Grivery  
ZAC des Delaches  
CS 41077  
91978 Courtaboeuf Cedex  
France  
Tel: +33 1 60 12 71 65  
Fax: +33 1 60 12 71 66  
[france@fr.tdk-lambda.com](mailto:france@fr.tdk-lambda.com)  
[www.fr.tdk-lambda.com](http://www.fr.tdk-lambda.com)



**Italy Sales Office**  
Via dei Lavoratori 128/130  
20092 Cinisello Balsamo (MI)  
Italy  
Tel: +39 02 61 29 38 63  
Fax: +39 02 61 29 09 00  
[info.italia@it.tdk-lambda.com](mailto:info.italia@it.tdk-lambda.com)  
[www.it.tdk-lambda.com](http://www.it.tdk-lambda.com)



**TDK-Lambda Germany GmbH**

Karl-Bold-Strasse 40  
77855 Achern  
Germany  
Tel: +49 7841 666 0  
Fax: +49 7841 5000  
[info.germany@de.tdk-lambda.com](mailto:info.germany@de.tdk-lambda.com)  
[www.de.tdk-lambda.com](http://www.de.tdk-lambda.com)



**Austria Sales Office**  
Aredstrasse 22  
2544 Leobersdorf  
Austria  
Tel: +43 2256 655 84  
Fax: +43 2256 645 12  
[info.germany@de.tdk-lambda.com](mailto:info.germany@de.tdk-lambda.com)  
[www.de.tdk-lambda.com](http://www.de.tdk-lambda.com)



**TDK-Lambda UK Ltd.**

Kingsley Avenue  
Ilfracombe  
Devon EX34 8ES  
United Kingdom  
Tel: +44 (0) 12 71 85 66 66  
Fax: +44 (0) 12 71 86 48 94  
[powersolutions@uk.tdk-lambda.com](mailto:powersolutions@uk.tdk-lambda.com)  
[www.uk.tdk-lambda.com](http://www.uk.tdk-lambda.com)



**Nemic Lambda Ltd.**

Kibbutz  
Givat Hashlosha 48800  
Israel  
Tel: +9 723 902 4333  
Fax: +9 723 902 4777  
[info@nemic.co.il](mailto:info@nemic.co.il)  
[www.nemic.co.il](http://www.nemic.co.il)



**Russia**

Technical Support:  
St Petersburg  
Tel: +7 (812) 6580463  
Sales:  
Moscow  
Tel: +7 (499) 7557732  
[info@tdk-lambda.ru](mailto:info@tdk-lambda.ru)  
[www.tdk-lambda.ru](http://www.tdk-lambda.ru)

**LOCAL DISTRIBUTION**

