



## CC-E Series

Compact, 1.5W to 10W Single & Dual DC-DC Converters

- Compact Footprint/Low Profile
- Through Hole or SMT Versions
- 5V, 12V, 24V & 48V Inputs
- 3.3 to 30V<sup>1</sup> Single,  $\pm 12$  to 15V Dual Outputs
- Output Voltage Adjustment
- Input - Output Isolation
- RoHS Compliant
- 5 Year Warranty

### Key Market Segments & Applications

Telecommunications  
Instrumentation  
Datacom

### CC-E Features and Benefits

#### Features

- Compact
- Self Contained
- Multiple Input Voltage configurations
- Open Frame (no potting)

#### Benefits

- Less PCB Area Used
- Requires No External Components
- Easier System Configuration
- Lighter in Weight, Suitable for Surface Mount (R Version)

### Specifications

	V	3.3V	5V	12/15V	$\pm 12/15$ (24/30) <sup>1</sup>
Nominal Output Voltage	V	3.3V	5V	12/15V	$\pm 12/15$ (24/30) <sup>1</sup>
DC Input	V	5V: 4.5-9.0V, 12V: 9-18V, 24V: 18-36V, 48V: 36-76V			
Efficiency	%	71 to 90% model dependant			
Output Voltage Tolerance	%	1.5-10W: $\pm 3\%$ , 15-25W: $\pm 5\%$			
Output Adjustment (via trim pin)	V	3.15-3.6V	4.75-6.0V	11.4-15V	22.8 - 30V
Line Regulation	mV	20		40	80
Load Regulation	mV	40		100	600 <sup>2</sup>
Temperature Coefficient	%	$\leq \pm 0.02\%/^{\circ}\text{C}$			
Preload	-	No preload required			
Output Ripple (typ./max.BW 50MHz)	mV	40/120			30/120
Overcurrent Protection	-	Output current limiting with automatic recovery			
Overvoltage Protection	-	No			
Remote On/ Off	-	CC1R5, 3, 6, & 10: RC terminal open, output is OFF; RC terminal to -Vin (0-0.4V), output is ON			
Operating Temp.- Convection	$^{\circ}\text{C}$	-40 $^{\circ}\text{C}$ to +85 $^{\circ}\text{C}$ , derates linearly to 40% load from +50 $^{\circ}\text{C}$ to +85 $^{\circ}\text{C}$			
Operating Temp.- Forced Air	$^{\circ}\text{C}$	-40 $^{\circ}\text{C}$ to +85 $^{\circ}\text{C}$ with 1m/s air full load			
Storage Temperature	$^{\circ}\text{C}$	-40 $^{\circ}\text{C}$ to +85 $^{\circ}\text{C}$			
Humidity (non Condensing)	-	95% RH max.(maximum wet-bulb temperature: +38 $^{\circ}\text{C}$ )			
Isolation Voltage	-	500VAC 1 min. Input to output, input to case, output to case			
Isolation Resistance	$\Omega$	Input to output, input to case, output to case: 50M $\Omega$ min. (500VDC)			
Shock	m/s <sup>2</sup>	980m/s <sup>2</sup> (100G) 6ms (6 directions, each 3 times)			
Vibration (non Operating)	-	10 to 55Hz (sweep for 15min) 1.52mm constant, 3 directions X, Y, Z each 2 hours			
Safety Agency Certifications	-	IEC/EN/UL/CSA60950-1, IEC/EN/UL/CSA62368-1 and CE Mark			
Weight	g	CC1R5: 3.2, CC3: 4.5, CC6: 5.8, CC10:10.0			
Size (L x W x H) (Through Hole & SMD package)	mm	CC1R5: 16.51 x 16.61 x 8.51; CC3: 22.86 x 16.61 x 8.51; CC6: 22.86 x 21.11 x 8.51 CC10: 35.56 x 22.61 x 8.51 CC3: SIP type 27.69 x 9.19 x 17.91			
Warranty	yrs	5			

#### Notes:

1. For 24V/30V output - connect across +Vout & -Vout and leave "common out" pin not connected. 2. Based upon equal load current from both outputs.
3. For 15V output connect trim to -Vout. 4. See Installation Manual for full specifications, test methods of parameters and application notes.

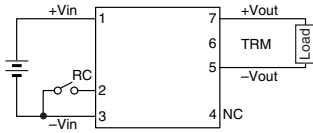
Model Selector						
Output Voltage (V)	Output Current (A)	Output Power (W)	5V Input	12V Input	24V Input	48V Input
<b>Single Outputs</b>						
3.3	0.4	1.5	CC1R5-0503SF-E	CC1R5-1203SF-E	CC1R5-2403SF-E	CC1R5-4803SF-E
3.3	0.8	3	CC3-0503SF-E	CC3-1203SF-E	CC3-2403SF-E	CC3-4803SF-E
3.3	1.2	6	CC6-0503SF-E	CC6-1203SF-E	CC6-2403SF-E	CC6-4803SF-E
3.3	2.5	10	CC10-0503SF-E	CC10-1203SF-E	CC10-2403SF-E	CC10-4803SF-E
5	0.3	1.5	CC1R5-0505SF-E	CC1R5-1205SF-E	CC1R5-2405SF-E	CC1R5-4805SF-E
5	0.6	3	CC3-0505SF-E	CC3-1205SF-E	CC3-2405SF-E	CC3-4805SF-E
5	1.0	5	CC6-0505SF-E	-	-	-
5	1.2	6	-	CC6-1205SF-E	CC6-2405SF-E	CC6-4805SF-E
5	2.0	10	CC10-0505SF-E	CC10-1205SF-E	CC10-2405SF-E	CC10-4805SF-E
12(15)	0.125(0.1)	1.5	CC1R5-0512SF-E	CC1R5-1212SF-E	CC1R5-2412SF-E	CC1R5-4812SF-E
12(15)	0.25(0.2)	3	CC3-0512SF-E	CC3-1212SF-E	CC3-2412SF-E	CC3-4812SF-E
12(15)	0.5(0.4)	6	CC6-0512SF-E	CC6-1212SF-E	CC6-2412SF-E	CC6-4812SF-E
12(15)	0.8(0.64)	10	CC10-0512SF-E	-	-	-
12(15)	1.0(0.8)	10	-	CC10-1212SF-E	CC10-2412SF-E	CC10-4812SF-E
<b>Dual Outputs</b>						
±12 (15) <sup>3</sup>	0.06(0.05)	1.5	CC1R5-0512DF-E	CC1R5-1212DF-E	CC1R5-2412DF-E	CC1R5-4812DF-E
±12 (15) <sup>3</sup>	0.125(0.1)	3	CC3-0512DF-E	CC3-1212DF-E	CC3-2412DF-E	CC3-4812DF-E
±12 (15) <sup>3</sup>	0.25(0.2)	6	CC6-0512DF-E	CC6-1212DF-E	CC6-2412DF-E	CC6-4812DF-E
±12 (15) <sup>3</sup>	0.4(0.32)	10	CC10-0512DF-E	-	-	-
±12 (15) <sup>3</sup>	0.45(0.36)	10	-	CC10-1212DF-E	CC10-2412DF-E	CC10-4812DF-E

Options	
Version	Description
F-E	Through hole mounting (DIP)
R-E	Surface mount (SMD)
S-E	Through hole mounting (SIP) (SIP option available for CC3 only)

Pinout (CC1R5, 3, 6, and 10)		
Pin	Single	Dual
1	+Vin	+Vin
2	RC	RC
3	-Vin	-Vin
4	NC	-Vout
5	-Vout	Common out
6	TRM	TRM
7	+Vout	+Vout

## Pin Out Diagrams CC-E Series

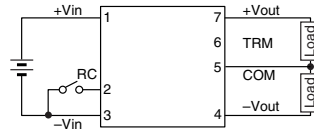
### CONNECTIONS CC1R5-□□□□S□-E



**TERMINAL PIN CONFIGURATION**

No.1	+Vin
No.2	RC
No.3	-Vin
No.4	NC
No.5	-Vout
No.6	TRM
No.7	+Vout

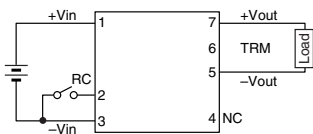
### CC1R5-□□□□D□-E



**TERMINAL PIN CONFIGURATION**

No.1	+Vin
No.2	RC
No.3	-Vin
No.4	-Vout
No.5	Common out
No.6	TRM
No.7	+Vout

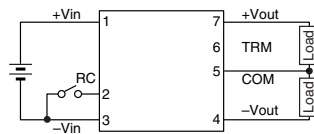
### CONNECTIONS CC3-□□□□S□-E



**TERMINAL PIN CONFIGURATION**

No.1	+Vin
No.2	RC
No.3	-Vin
No.4	NC
No.5	-Vout
No.6	TRM
No.7	+Vout

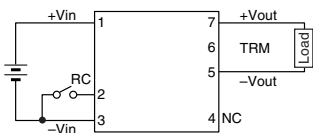
### CC3-□□□□D□-E



**TERMINAL PIN CONFIGURATION**

No.1	+Vin
No.2	RC
No.3	-Vin
No.4	-Vout
No.5	Common out
No.6	TRM
No.7	+Vout

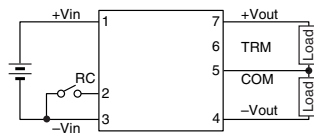
### CONNECTIONS CC6-□□□□S□-E



**TERMINAL PIN CONFIGURATION**

No.1	+Vin
No.2	RC
No.3	-Vin
No.4	NC
No.5	-Vout
No.6	TRM
No.7	+Vout

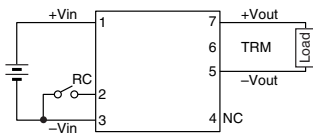
### CC6-□□□□D□-E



**TERMINAL PIN CONFIGURATION**

No.1	+Vin
No.2	RC
No.3	-Vin
No.4	-Vout
No.5	Common out
No.6	TRM
No.7	+Vout

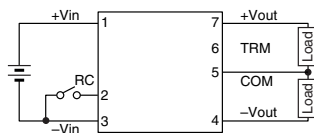
### CONNECTIONS CC10-□□□□S□-E



**TERMINAL PIN CONFIGURATION**

No.1	+Vin
No.2	RC
No.3	-Vin
No.4	NC
No.5	-Vout
No.6	TRM
No.7	+Vout

### CC10-□□□□D□-E



**TERMINAL PIN CONFIGURATION**

No.1	+Vin
No.2	RC
No.3	-Vin
No.4	-Vout
No.5	Common out
No.6	TRM
No.7	+Vout



## TDK-Lambda France SAS

3 Avenue du Canada  
Parc Technopolis  
Bâtiment Sigma  
91940 les Ulis  
France  
Tel: +33 1 60 12 71 65  
Fax: +33 1 60 12 71 66  
france@fr.tdk-lambda.com  
www.emea.lambda.tdk.com/fr



## Italy Sales Office

Via Giacomo Matteotti 62  
20092 Cinisello Balsamo (MI)  
Italy  
Tel: +39 02 61 29 38 63  
Fax: +39 02 61 29 09 00  
info.italia@it.tdk-lambda.com  
www.emea.lambda.tdk.com/it



## Netherlands

info@nl.tdk-lambda.com  
www.emea.lambda.tdk.com/nl



## TDK-Lambda Germany GmbH

Karl-Bold-Strasse 40  
77855 Achern  
Germany  
Tel: +49 7841 666 0  
Fax: +49 7841 5000  
info.germany@de.tdk-lambda.com  
www.emea.lambda.tdk.com/de



## Austria Sales Office

Aredstrasse 22  
2544 Leobersdorf  
Austria  
Tel: +43 2256 655 84  
Fax: +43 2256 645 12  
info@at.tdk-lambda.com  
www.emea.lambda.tdk.com/at



## Switzerland Sales Office

Eichtalstrasse 55  
8634 Hombrechtikon  
Switzerland  
Tel: +41 44 850 53 53  
Fax: +41 44 850 53 50  
info@ch.tdk-lambda.com  
www.emea.lambda.tdk.com/ch



## Nordic Sales Office

Haderslevvej 36B  
DK-6000 Kolding  
Denmark  
Tel: +45 8853 8086  
info@dk.tdk-lambda.com  
www.emea.lambda.tdk.com/dk



## TDK-Lambda UK Ltd.

Kingsley Avenue  
Ilfracombe  
Devon EX34 8ES  
United Kingdom  
Tel: +44 (0) 12 71 85 66 66  
Fax: +44 (0) 12 71 86 48 94  
powersolutions@uk.tdk-lambda.com  
www.emea.lambda.tdk.com/uk



## TDK-Lambda Ltd.

1 Alexander Yanai  
Segula  
Petah-Tikva  
Israel  
Tel: +9 723 902 4333  
Fax: +9 723 902 4777  
info@tdk-lambda.co.il  
www.emea.lambda.tdk.com/il



## C.I.S.

**Commercial Support:**  
Tel: +7 (495) 665 2627  
**Technical Support:**  
Tel: +7 (812) 658 0463  
info@tdk-lambda.ru  
www.emea.lambda.tdk.com/ru

## Local Distribution

